

Date September 23, 2013

Submission of the 2012-2013 Annual Report of the Greater Des Moines Public Art Foundation as required by agreement.

Moved by _____ to receive and file.

COUNCIL ACTION	YEAS	NAYS	PASS	ABSENT
COWNIE				
COLEMAN				
GRIESS				
HENSLEY				
MAHAFFEY				
MEYER				
MOORE				
TOTAL				

CERTIFICATE

I, DIANE RAUH, City Clerk of said City hereby certify that at a meeting of the City Council of said City of Des Moines, held on the above date, among other proceedings the above was adopted.

IN WITNESS WHEREOF, I have hereunto set my hand and affixed my seal the day and year first above written.

MOTION CARRIED

APPROVED

Mayor

City Clerk



PUBLIC FOUNDATION
GREATER **ART**
DES MOINES

2012-2013 ANNUAL REPORT



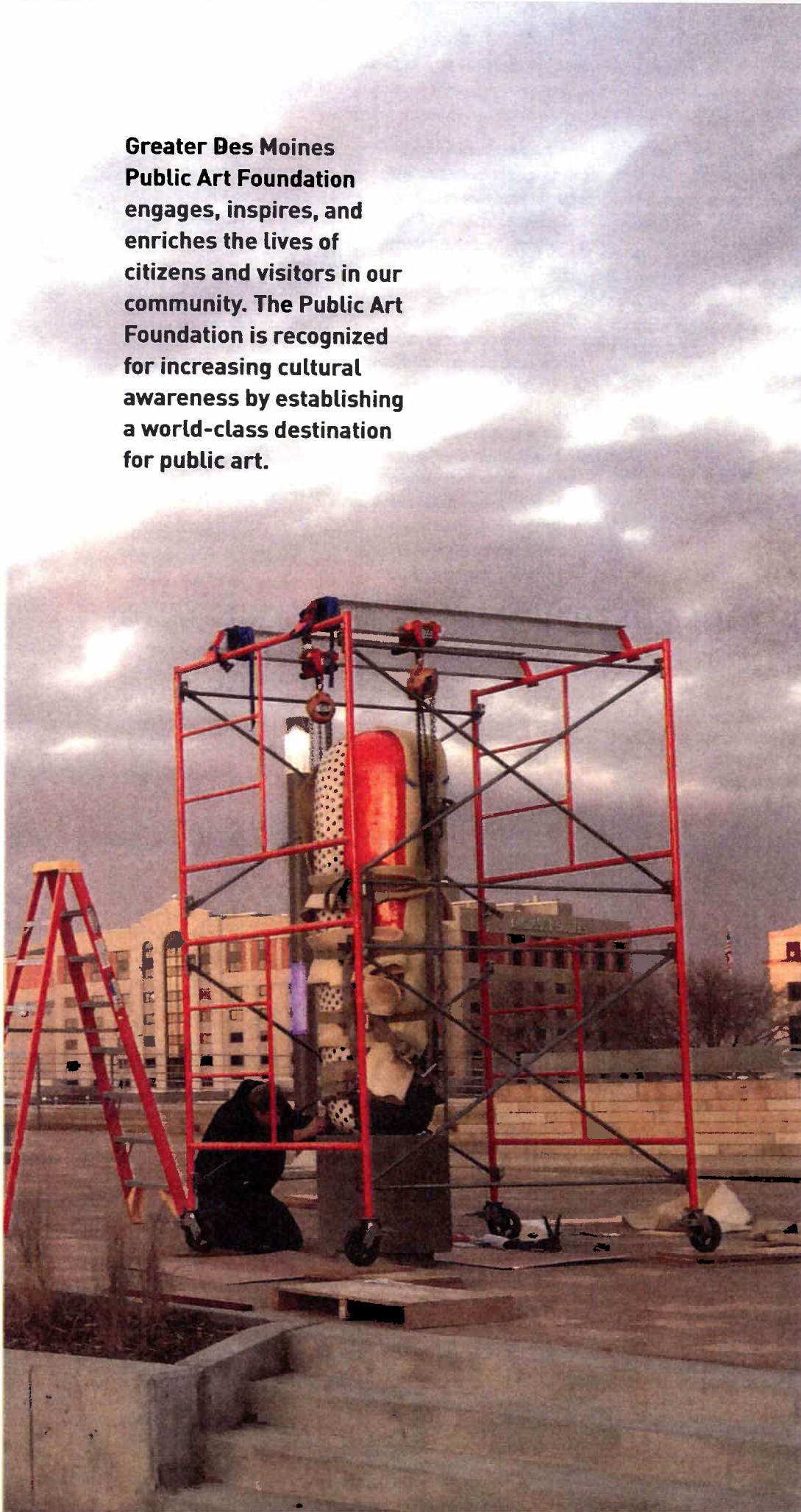
MISSION+VISION

**Greater Des Moines
Public Art Foundation
places art in
public spaces through
public and private
collaborations.**

Greater Des Moines Public Art Foundation engages, inspires, and enriches the lives of citizens and visitors in our community. The Public Art Foundation is recognized for increasing cultural awareness by establishing a world-class destination for public art.

Greater Des Moines Public Art Foundation proudly:

- Identifies, selects, and commissions works of art created by venerated professional artists for installation in public spaces;
- Acquires artworks for a public art collection by means of direct commissions, invitationals, community initiated projects, and gifts;
- Enhances the physical environment, public buildings, and lands;
- Provides financial support and assistance in commissioning professional artists for qualified urban development projects that are initiated by either the municipality or the private sector;
- Integrates the work and thinking of professional artists into the planning, design, and construction of city and privately developed facilities, e.g., buildings, parks, streetscapes, and any other facilities and spaces that would benefit from participation by an artist;
- Celebrates the multi-cultural and diverse character of the community's residential and commercial neighborhoods and citizens;
- Nurtures a sense of citizen ownership and pride in a public art collection;
- Encourages creative partnerships between artists and residents, neighborhoods, businesses, and community organizations located in the city; and
- Complements and enhances urban planning and development projects.





Worldwide, cities and towns aspire to be places where people want to live and want to visit. Serving a metropolitan population of more than 600,000, the Greater Des Moines Public Art Foundation (GDMPAF) knows that cities with strong public art expressions break the trend of sameness and blandness. When we think about memorable places, we think about their icons—consider Eero Saarinen's Arch in St. Louis (fabricated in Des Moines), Anish Kapoor's stainless

through cooperation, not compromise, and to create opportunities for artists to engage in the issues of our time. There is strength in an endeavor that requires so much collaboration.

Celebrated American artists Jun Kaneko, Kerry James Marshall, and Alice Aycock have each designed signature public art projects for Des Moines. These artists inevitably bring personal and distinctive interpretations to each idea, site, social construct, and aesthetic potential. In November 2012, five *Dango* sculptures by Jun Kaneko, part of a project along the Principal Riverwalk at Court Avenue, were dedicated.

The associated mural by Kaneko, *Expansion*, is projected to be completed by Fall 2013. The projects designed by Marshall and Aycock, a monument to bring a historic achievement to light, and a sculpture to be integrated into the infrastructure of a bridge, have generated excitement while moving forward in various phases of design development. By reinforcing community culture, all of these public art projects will act as catalysts for community generation or regeneration.

The GDMPAF pledged its support of a new project with media artist Jim Campbell in July 2012. The LED light installation is paired with the transformation of the former Nollen Plaza into an exciting new public space design called *Cowles Common*. The project was formally announced in May 2013.

A GLIMPSE OF A WORLD-CLASS FUTURE

steel *Cloud Gate* (aka "The Bean") in Chicago, and Robert Indiana's Pop sculpture *LOVE* in Indianapolis, Paul Manship's gilt-bronze sculpture of Prometheus at Rockefeller Center in New York City, and even temporary projects like Leo Villareal's Bay Bridge Lights installation in San Francisco.

It is no small feat to bring world-class artists and their creative visions together with civil engineers, urban planners, and public works staffers of Des Moines' city agencies; but GDMPAF has done so through two mayoral administrations: Preston A. Daniels (1999–2004) and Frank Cownie (since 2004).

We are actively shaping Des Moines' future and strengthening the case for the value and relevance of public art. We do it by working together and more effectively. The challenge of this process is to support artists' creative involvement



UPPER Sol LeWitt (American, 1928–2007)
Wall Drawing 1238, Whirls and Twirls "p", 2007
Location: John and Mary Pappajohn Education Center,
1200 Grand Avenue, Des Moines

LOWER Mark de Suvero (American, b. China 1933)
T8, 1987
Painted Steel
Promised give of John and Mary Pappajohn to the
Des Moines Art Center, T.2009.67
Location: John and Mary Pappajohn Sculpture Park,
northwest corner of Locust and 15th Streets

Photos: M. J. Rowe

**Edmunds
Elementary School
students celebrate
with artist Jun
Kaneko at the
November 13,
2012, dedication
of his five Dango
sculptures along
the Principal
Riverwalk.**

In September 2012, GDMPAF marked its second year in partnership with Artstop to present "Project Spaces." This initiative showcased eight temporary public art installations throughout Des Moines' cultural districts for the community at large. Projects of all sizes enhanced the walking experience, appealed to local residents and tourists, and drew travelers by giving them another reason to visit. With the unfortunate dissolve of the Artstop organization, the GDMPAF welcomed a leadership group of volunteers to continue the temporary public art projects. The renewed

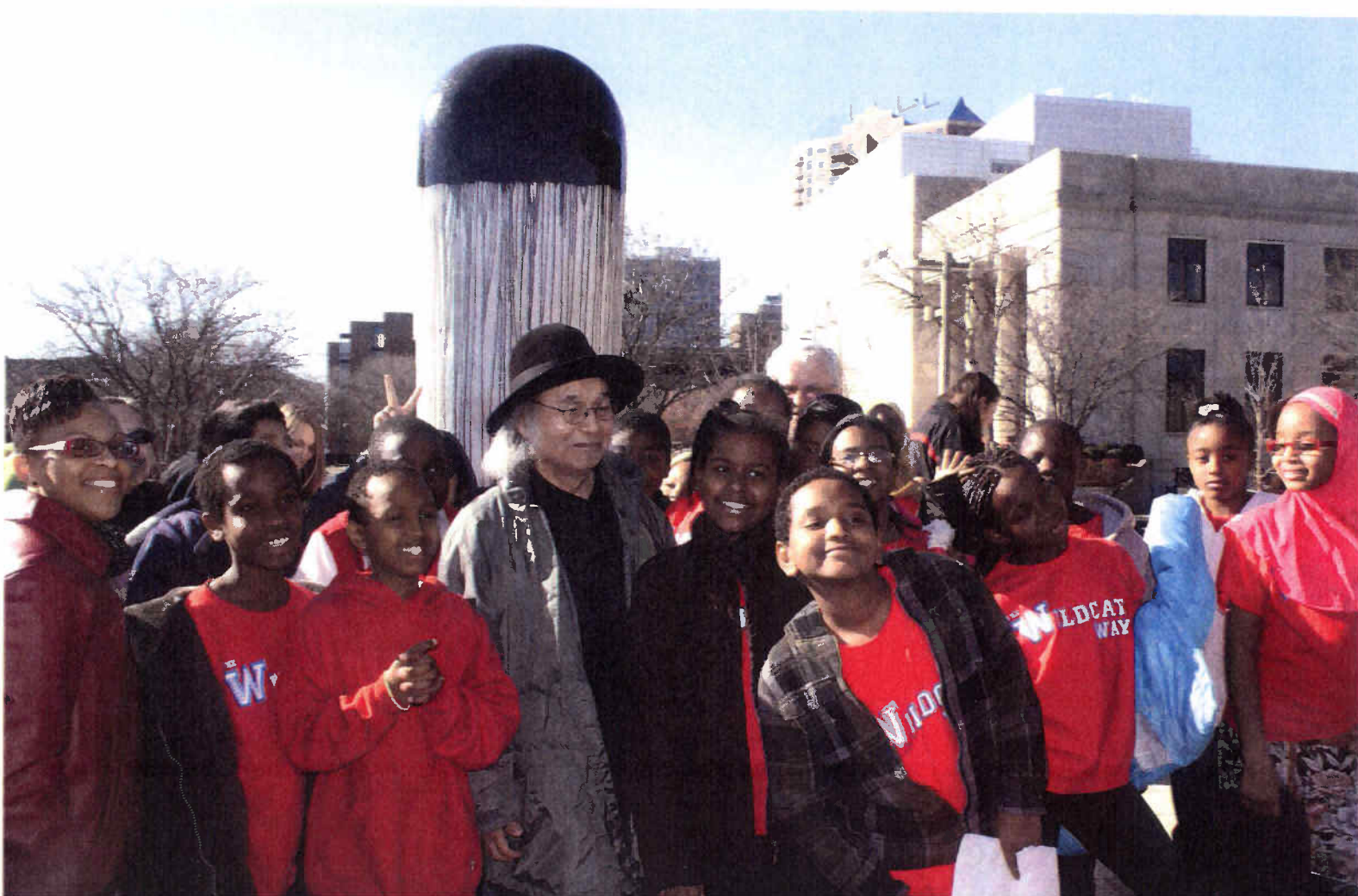
initiative will develop new projects to re-envision and refresh pedestrian-focused corridors in the city.

The uniquely accessible and free "DSM Public Art" App, available on iPhone and iPad, has enabled people to experience art during daily life, outside of museums or other art institutions. Because of its success, the updating of information and addition of new projects to the App, as well as development of an Android version, are underway.

Newly realized and future public art projects have generated media attention for the region. The more attention the Metro area receives, the more interest this community will

generate as a destination to work, live, and visit.

This year has been extraordinary. I extend my sincere thanks and gratitude to the Board of Directors, under the leadership of President Paul Mankins, for their collective efforts in realizing the Foundation's mission through its programming and initiatives. Because of the support and patronage of artists, architects, administrators, design professionals, community residents, civic leaders, elected officials, approval agencies, funding agencies, and construction teams, the Foundation remains a vital civic resource for public art.



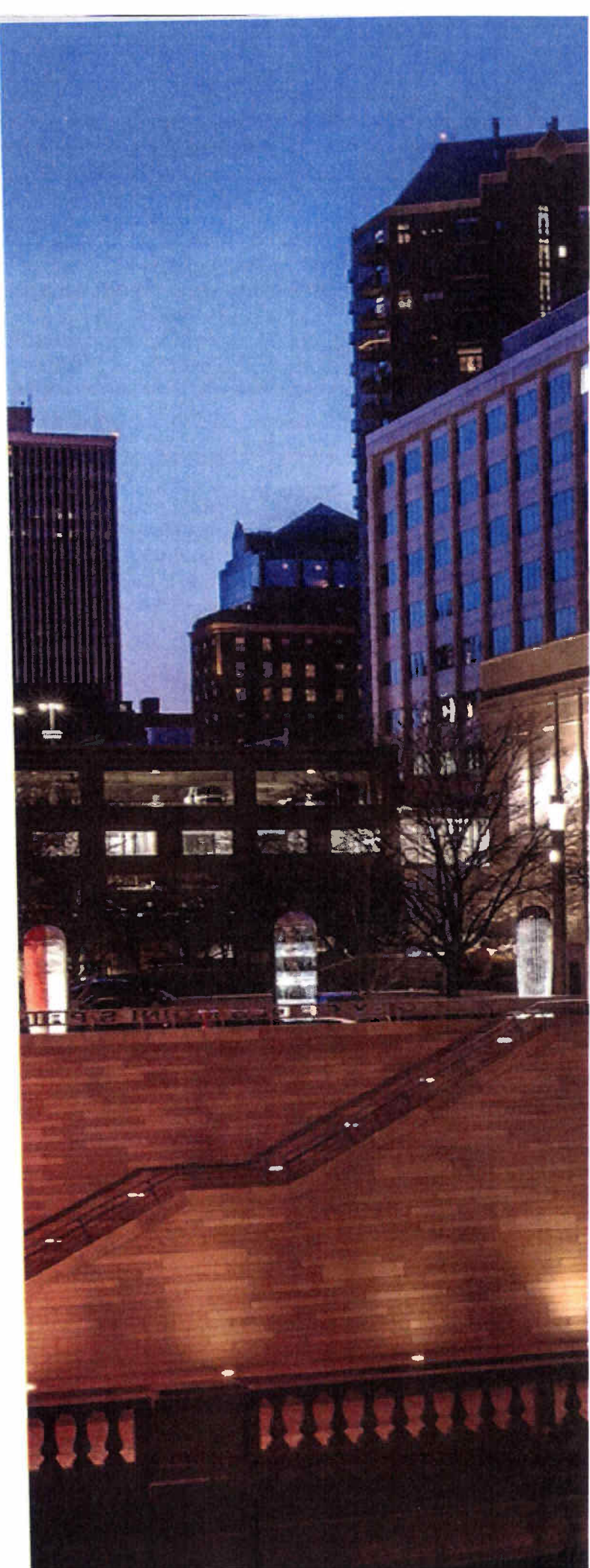
PRINCIPAL RIVERWALK



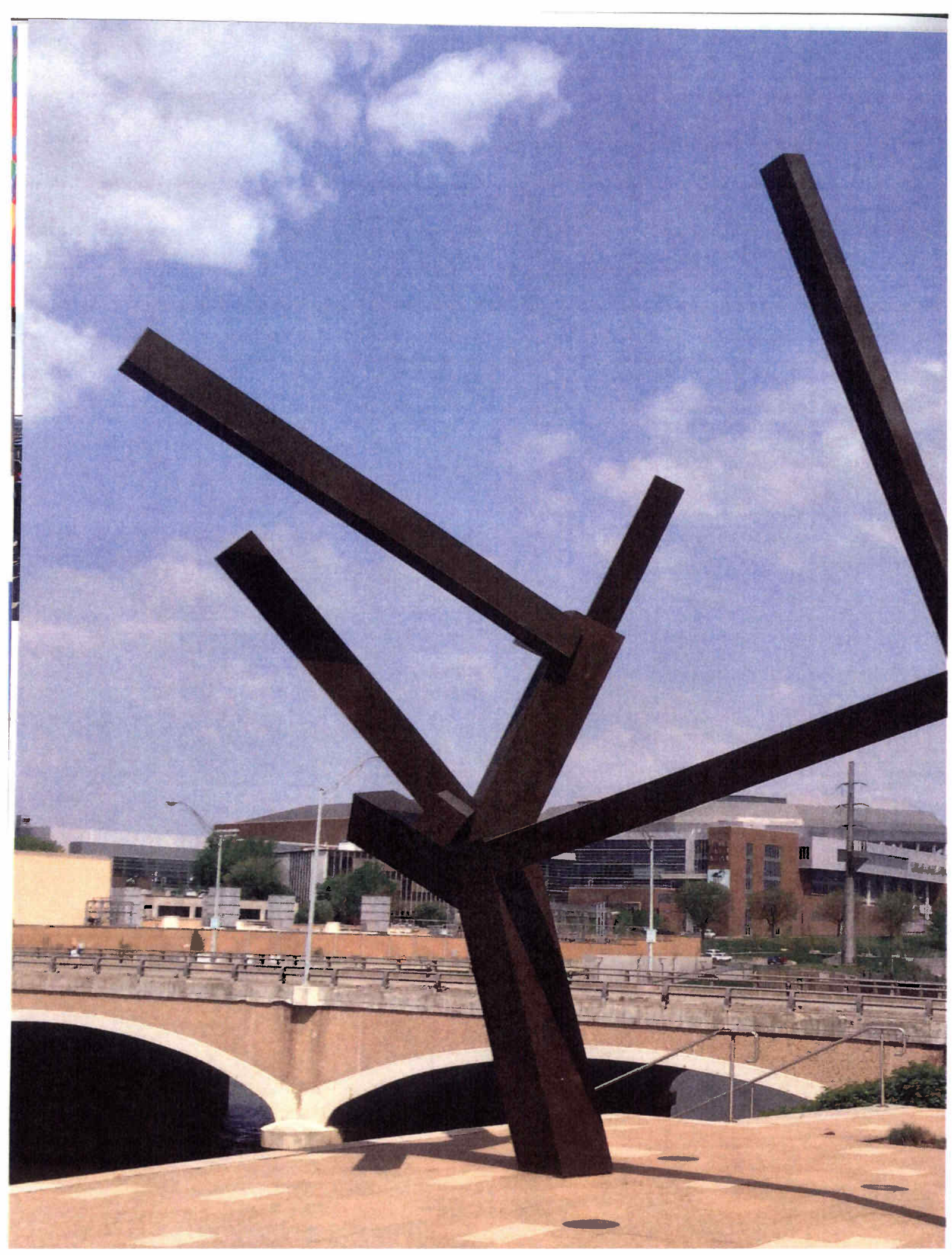
DANGOS INSTALLATION AND DEDICATION CELEBRATED AT HUBSPOT

Citizens and supporters gathered to publicly acknowledge the new installation of five *Dangos* by artist Jun Kaneko. The community dedication on November 13, 2012 at the HubSpot Plaza welcomed artist Jun Kaneko and project patrons among the honored guests. A brief ceremony included remarks by Kaneko, GDMPAF Board President Paul Mankins, Des Moines City Manager Rick Clark, The Honorable Chris Hensley of the City

Council, and community representatives. The event was supported in part, by the City of Des Moines, the Downtown Community Alliance grant, Operational Downtown, Musician Patrick Fleming, Des Moines Social Club, and Downtown Neighborhood Association provided in-kind support, and Lucca Restaurant provided dumplings and light refreshment. This public art project was funded by City of Des Moines, Jim and Helen Hubbell Charitable Foundation, Trudy and G. David Hurd, Michele and Barry Griswell, Lynette and Kurt Rasmussen, Substance Architecture, BRAVO, and private support.





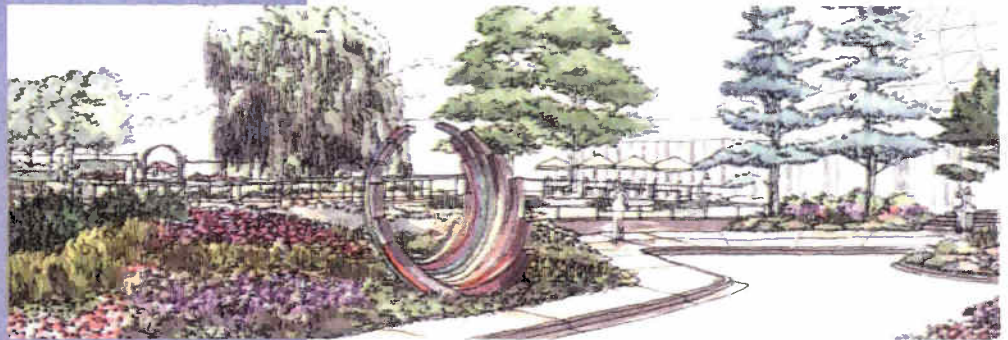


PRINCIPAL RIVERWALK

Stroll north along the Principal Riverwalk toward Locust Street and view the stately Long Look Garden cascading from City Hall on the east riverbank. Joel Shapiro's sticklike bronze sculpture is masterfully poised at the center of the plaza at the top of the grand staircase of Long Look Garden. The sculpture stands 20 feet tall and plays with gravity's pull in an interactive tussle.

An excerpt from "Public Art in the City" tour.

SCULPTURES HAVE NEW SITES IN GREATER DES MOINES BOTANTICAL GARDEN

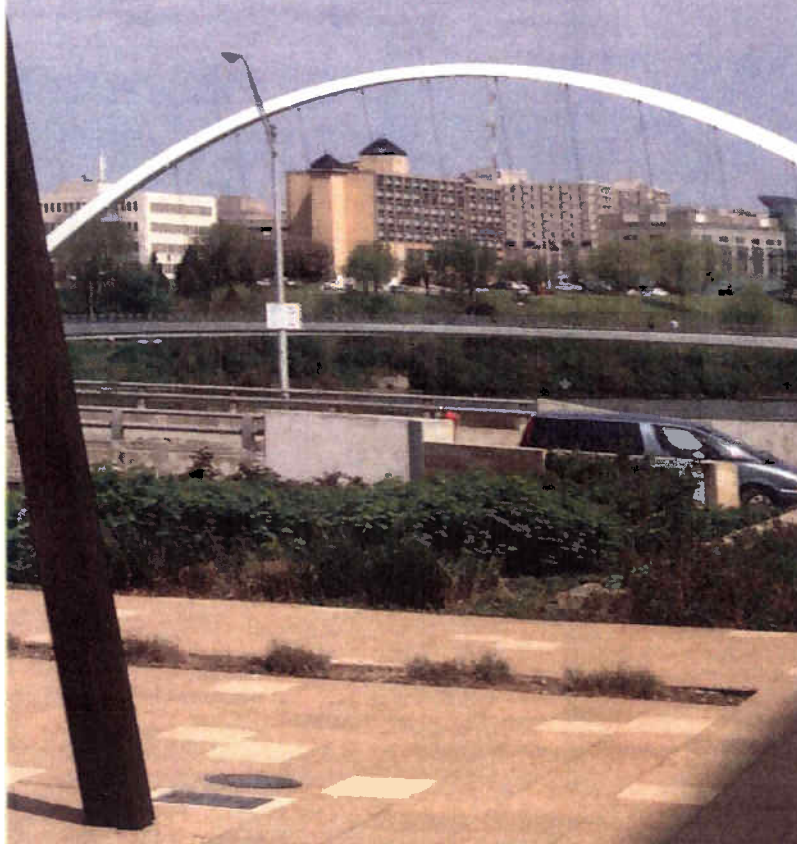


In January 2013, the GDMPAF board reviewed and approved two new sites identified on the Botanical Garden Master Plan for the following sculptures. *Spectral Liberation* by Christiane Martens will be relocated on the grounds and *The Iowa Prairie* by Neal Deaton will be installed on an interior wall. In February 2013, after representatives toured the facility and surveyed possible sites with Stephanie Jutila, president and CEO of the Greater Des Moines Botanical Garden, the GDMPAF approved the placement of the following two additional sculptures for the Botanical Garden. Peter Morasco's courtyard fountain will be integrated into the new Buck Rose Garden, and Mark LaMair's *Persona* will be installed in the new Conifer and Gravel Garden.

DES MOINES BICYCLE COLLECTIVE FEATURES PUBLIC ART WALK

A downtown guide, created by the Des Moines Bicycle Collective, was published in April 2012. It features a 1.4 miles, walking tour called *Public Art in The City* by M. Jessica Rowe, and a PDF download is available online at www.dsmbikecollective.org.

LEFT Joel Shapiro (American, 1941)
Untitled 2003
Bronze
Permanent loan to the Principal Riverwalk, Gift of the Martin Bucksbaum Family Foundation and the Mary Bucksbaum Scanlan Family Foundation, 2004. 27
Photo: M. J. Rowe



Among the past year's highlights was PROJECT SPACES in September 2012. The GDMPAF collaborated with Artstop and provided funding for this temporary art project. Of note were site-integrated artworks throughout six cultural and entertainment districts of the metro area.

In addition, cash prizes were awarded by a three-person jury: a "Greater Des Moines Public Art Foundation Site-Integrated Prize" and a "Greater Des Moines Public Art Foundation Merit Prize." Through social media, a "People's Choice Prize" was also given to Annick Ibsen.

Co'Motion Dance Theater
Central Iowa
Clearly—The Glass Project
Des Moines Social Club
at Kirkwood Hotel, Court Avenue Cultural District

Clearly of was a multi-disciplinary performance with Composer Matthew Coley and Valerie Williams, artistic director and choreographer of Co'Motion. The *Clearly* performance featured over 100 pieces of glass assembled or hanging in a space to produce music.

GREATER DES MOINES PUBLIC ART FOUNDATION SITE-INTEGRATED PRIZE

Matt Coronas
Des Moines, Iowa
Aqua Day (RIGHT TOP)
Digitally-produced film
John and Mary Pappajohn Education Center
Western Gateway District

To be seen by pedestrians from the outside, looking in, Coronas patterned his design after the curvy cutouts of Henri Matisse. Michael Morain, critic for *The Des Moines Register*, wrote that Coronas

"wrapped the building's southeast corner in more than 1,300 square feet of colored transparency film, turning the windows into a three-story kaleidoscope."¹

Sarah Deppe
Cedar Falls, Iowa
Untitled sculpture
Roosevelt Rain Garden, Hubbell School Field
Roosevelt District

An environmentalist, Sarah Deppe's artwork incorporated bark and wood. Using all natural materials collected from the ground, her sculptures will eventually decompose. Deppe wants her playful forms focus to evoke a serious dialogue toward a more ecological conscious community.

GREATER DES MOINES PUBLIC ART FOUNDATION SITE-INTEGRATED PRIZE

Peter Goché
Ames, Iowa
Culture Carriage (BELOW)
Cedar Wood and artifacts
Meredith Corporation
Western Gateway District

Goché's interest in this site had to do with the nature of edges and thresholds as it relates to property rights and its associated social configuration. This project

blurred the threshold between the public space of the sidewalk and the private grounds of Meredith Corporation. In an effort to do so, he occupied the area between the serpentine retaining wall and the edge of the public walk with a portable bench whereby a passersby might sit.

Chaden Halfhill
Des Moines, Iowa
Untitled site-specific installation (PHOTO PAGE 20)
Venue: Studio3 Design
Ingersoll Avenue District

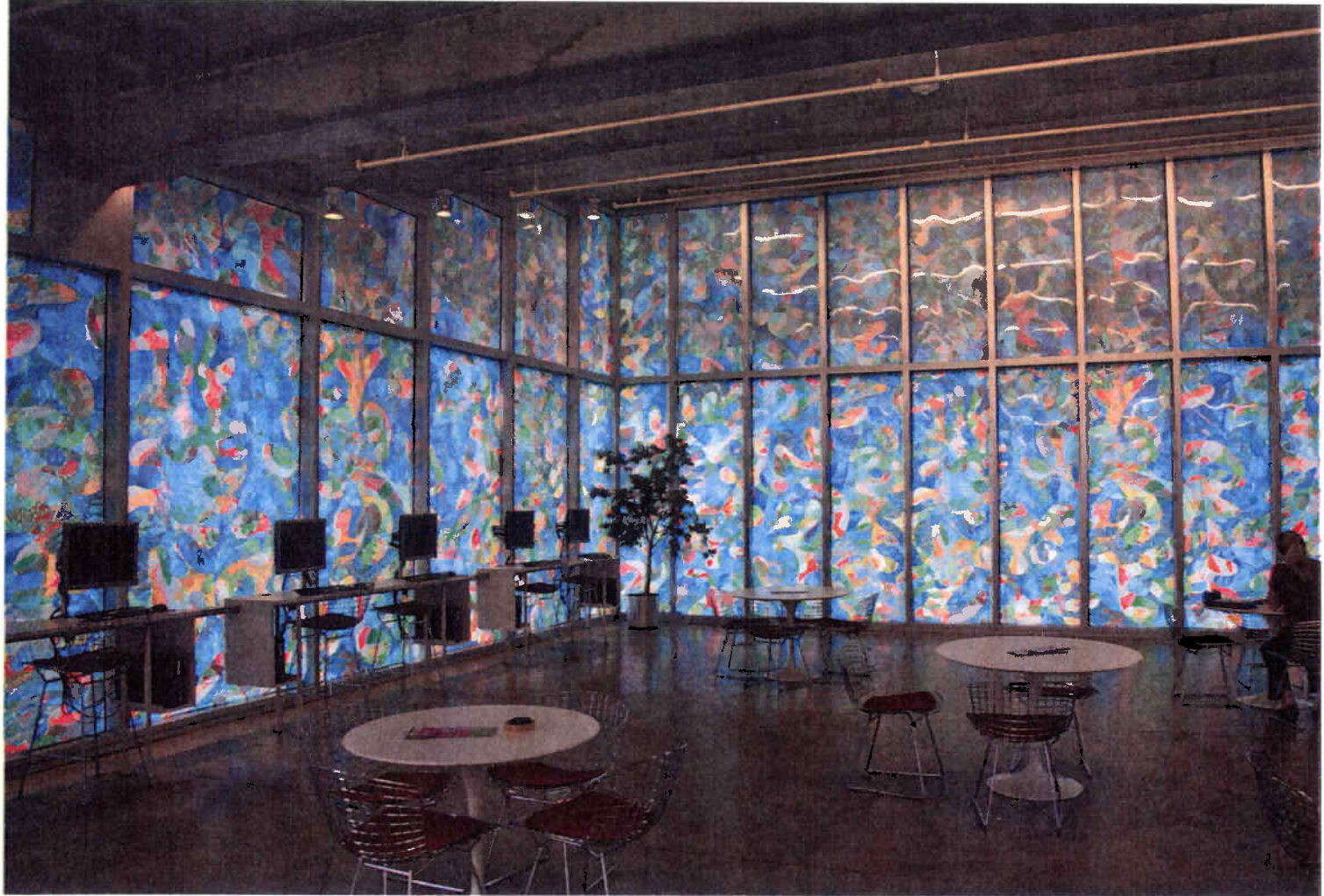
Site-specific sculptor Chaden Halfhill expanded upon a temporary piece he created within Veterans Memorial Auditorium during 2007. For this project, Halfhill honored the pain and loss endured when children precede their parents in death.

Travis Rice
Des Moines, Iowa
Untitled site-specific installation
Paper
Substance Architecture

"The intricate patterns that make up the structure of

PROJECT SPACES





various bacteria, viruses, parasites and general disgustingness are as unpredictable as the potential havoc they can create," said Rice. Seen as both awful and beautiful, the artist duplicates the patterns through drawing, painting and 3D investigation and moves his art from duplication to investigation."

Priscilla Sage

Ames, Iowa
State of Iowa Historical Building, Historic East Village Cultural District

A collection of fiber sculptures by Priscilla Sage, associate professor emeritus at Iowa State University, took inspiration from patterns and forms found in nature.

**GREATER DES MOINES
PUBLIC ART FOUNDATION
MERIT PRIZE**

Allison Svoboda

Chicago, Illinois
Mandala (RIGHT)
Ink and paper collage
Capital Square
Court Avenue District

The theory of fractal geometry; infinite layers of self-similar shapes repeated in every living thing, hold an endless fascination for Allison Svoboda. Plants, feathers, skeletons; this enormous energy in nature influences her work. The ephemeral quality of the paper and meditative aspect of the brushwork evoke a Buddhist mandala."





6TH AVENUE BRIDGE

Internationally acclaimed American artist Alice Aycock was selected in May 2012 for her conceptual design for 6th Avenue Bridge. Aycock's proposal is centered on the bridge and will become a portal or gateway to the City of Des Moines. In the reverse direction, it will become an entrance to the historic neighborhood on the north side of the river. From a distance, the project provides a point of arrival and departure for the traveler and operates as a landmark for the residents. The sculpture will signify the activity and energy that was generated historically and the energy and excitement that still exists.

In early July 2012, Aycock began work on the Design Development Documents for her proposal. The design is required to meet design specifications or standards for bridges set by AASHTO (American Association of State Highway and Transportation Office) and Iowa Department of Transportation (DOT). The information has provided an accurate depiction of the

proposed artwork, method of installation, and type and quality of material to be used in fabrication. The commissioned documents include architectural and structural system details. These documents also provided a better understanding of the project's scope and associated costs.

In June 2013, with \$250,000 of the estimated one million dollar budget in-hand, GDMPAF was actively seeking public and private support to advance the project to its next stage of design and fabrication.

UNTIL THE WOODS BEGAN TO MOVE

Since April 2013, representatives of Polk County Board of Supervisors and Iowa Events Center have collaborated with GDMPAF to address the care and preservation of the hedge maze, an integral part of the project *Until the Woods Began to Move* by artist Anna Gaskell. Winter storm damage from January 2013 affected the arborvitae trees. A more aggressive solution to developing and maintaining the hedge maze was recommended. Further research in consultation with a landscape architectural professional with expertise in hedge maze development will lead to an action plan.

EDUCATION RESOURCES

Our online searchable database (available on the website at dsmpublicartfundation.org) provides free access to more than 120 works of public art. To tie these public art projects to national curriculum standards, online cross-curricular lesson plans are available, as well.

We are continuing our commitment to develop educational resources and experiences that deepen and enhance the experience and understanding of public art in Greater Des Moines. During this report period, resources developed for pre K-12 students were available for ten public art projects for educators, students and families.

In November of 2012, a unique collaboration between the GDMPAF and Edmunds Elementary engaged fifth grade students in a cross curricular study of public art. This experience involved a diverse group of students in the investigation and research of public art and how it enriches lives in a community. As part of this study, the GDMPAF hosted nearly 40 fifth grade students at the dedication of Jun Kaneko's *Dangos*. The students talked with the artist, participated in the dedication, and closed the event by signing the Beatles hit "All You Need Is Love," with local musician Patrick Tape Fleming. After the dedication, the students communicated that meeting a "world class artist was inspiring."

A MONUMENTAL JOURNEY

In January 2013, the GDMPAF accepted the INBA funds raised and pledged of \$386,000 to move forward with the project *A Monumental Journey*. The GDMPAF will secure a new site, develop a contract with the artist, manage construction and installation, and collaborate with the INBA on the groundbreaking ceremony.

This public art project, *A Monumental Journey*, preserves the legacy of African American lawyers who, in 1925, founded the National Bar Association in Des Moines, fully dedicated to civil rights and justice and equality in the legal system. It commemorates the struggle, bravery, and hope required to overcome racism and discrimination.

In 2014, the internationally celebrated artist Kerry James Marshall will begin the project's design development phase to bring this remarkable history to light. The GDMPAF is working with the Iowa State Capitol Planning Commission to locate a site.

Jordan Weber (American, b. 1984) (detail)
Absorbing Barrier Study, 2012
Acrylic, canvas, wood and concrete
Created for Project Spaces 2012 in
collaboration with Artstop.
Photo: Jordan Weber

**NEW PUBLIC
ART BY
JIM CAMPBELL
UTILIZES
LED LIGHT**

Cowles Commons, previously named Nollen Plaza, is a block square urban park, dedicated in 1979 as part of the then new Civic Center Complex. The Civic Center was renamed "Des Moines Performing Arts" in May 2013. The name changes, paired with a significant transformation, will create an important new public space and downtown link from the East Village to the Western Gateway.

Des Moines Performing Arts President & CEO Jeff Chelesvig said the revitalized plaza reflected the needs of the community. The

Cowles Commons design team is led by Ken Smith of Ken Smith Landscape Architect, a landscape architect committed to creating landscapes as a way of improving the quality of urban life. Based in New York City, Smith graduated from Iowa State University and the Harvard University Graduate School of Design. RDG Planning & Design of Des Moines worked with Ken Smith Landscape Architect. Cal Lewis, professor and chair, Department of Architecture, Iowa State University, served as an architectural consultant. Arborists involved in the project were James Urban, founder of Urban Trees + Soils and David Jahn with the City of Des Moines.

Jim Campbell, a contemporary American artist who works primarily with LED light installations, collaborated on the Cowles Commons design. A new media artist, his custom electronic sculptures have made him a leading figure in the use of computer technology and video as an art form.

Campbell's public art project consists of low voltage LED lights embedded in a sweeping, mesh-like form suspended by poles and integrated into the plaza design. The dimensions of the artwork are approximately 30 to 40 feet high and 110 feet long. The sculpture was conceived as an activation device to engage visitors and encourage people to visit again.

COWLES COMMONS



COMMUNITY ENGAGEMENT— ALL YOU NEED IS LOVE

In December 2012, 6th Avenue Corridor (6AC) proposed a neighborhood mural initiative. For the mural project, 6AC identified the public artists Roberto Behar and Rosario Marquardt from Miami, Florida. This artist team left a positive impression with 6AC community leaders earlier in 2012, when they were selected as one of the finalists for 6th Avenue Bridge art project.

The exterior facade of the Wherry Building at the corner of College and 6th Avenues in Des Moines was the proposed location. The Wherry Building was built in 1887. It was abandoned and in a neglected physical state when placed on the National Register of Historic Places in 1998 to prevent its demolition. It was bought and renovated in 2005. By January 2013, GDMPAF confirmed the artists' interest, negotiated the artist fee and drafted the agreement for this temporary mural project, plus provided project support and management. On March 18, 2013, the

artists presented their work at a community meeting at the Wherry Building and sought comments from the public. The artists met with neighborhood leaders and City Community Development staff, and revisit the area. The Children and Family Urban Ministries staff, who administered youth and young adult programs in the building were identified as stakeholders, communicated with artists.

At the second community meeting on May 20, 2013, two design proposals were presented by the artist team. Neighborhood support favored the mural proposal *All You Need Is Love*. Social media comments from 6AC were initially "thrilling" however divided between *Flower Power* and *All You Need Is Love*. Remarks arose centered on historical preservation concerns. A public historian advocate suggested that an appropriate action, if the mural design was implemented, would be to delist the Wherry Building from the National Register. However, the State Historic Preservation Office pointed out that delisting is very rare and typically happens if a building is demolished. Various constraints began to emerge from the perspective of important stakeholders. Though the artists were willing to revise aspects of the mural design, the proposal was compromised and therefore GDMPAF and its partner 6AV were unable to move forward with the project.



Two design proposals were presented by the artist team: *All You Need Is Love* (top) and *Flower Power* (lower).



Photos courtesy of r&r studios, Miami, Florida



Below are the names, addresses, qualifications and terms of office of each person who has served as a member of the Board in FY 2011-12.

King Au

Owner, King Au Studio
943 35th Street
Des Moines, Iowa 50312
Term is open; resigned 6/2013

Born and raised in Hong Kong, King Au obtained a Master's Degree in Architecture. For more than 20 years, he has been providing photographic services to national magazines and retailers. King Au was the recipient of the Outstanding Young Alumni Award (1996) at Iowa State University. He also served on the Department of Architecture, ISU, Advisory Board (2007-2009).

Program Supervisor of The Family Violence Center, and Director of Mentor Iowa. As a community activist and volunteer she has served on numerous boards and commissions, including 16 years as a member of the Child Death Review Team of Iowa. Among numerous honors, she was recognized as a Women of Achievement in 2001. Currently, Fingerman is volunteering as a docent at the Des Moines Art Center, as well as a board member of the Art Center and acting chair of the museum's Acquisition Committee.

Jeff Fleming

Director, Des Moines Art Center
4700 Grand Avenue
Des Moines, Iowa 50312
Third term expires 12/2013

Director of the Des Moines Art Center, Jeff Fleming also has served as its acting director, deputy director, senior curator, and curator. He was chief curator of exhibitions at the Southeastern Center for Contemporary Art in Winston-Salem, North Carolina. Fleming studied at East Carolina University in Greenville, North Carolina and holds a master of fine arts degree from Pratt Institute in Brooklyn, New York. His exhibition projects have focused on presenting the first one-person museum shows for younger, international artists. These artists include the American artists Tom Sachs, John Currin, Ellen Gallagher, Maya Lin, and Tom Friedman, as well as the British artist Cecily Brown, the German artists Christian Jankowski and Anselm Reyle, and the Chinese artist Yan Pei Ming. In 2011, *Art and Living* magazine named him one of eleven innovative directors of American museums.

Marty Gross

Community Leader Retired
Investment Advisor
1623 Center Street
Des Moines, IA 50314
First term expires 12/2015

Marty Gross retired from a career in the financial service industry, earning the Certified Investment Management Advisor designation. She is one of the early preservationists in the Sherman Hill Historic District in Des Moines. As a practitioner of historic preservation and conservation, she reclaimed and restored a Victorian home and has the distinction of rescuing a number of historical properties from demolition. Her fascination with the world and curiosity about indigenous peoples and their way of life has been a steadfast passion. She has explored

tribal and ethnic cultures through her travels in remote areas of Africa and Asia. Gross supports numerous nonprofit organizations, including the Des Moines Art Center, Drake University, and Iowa Pride Network. As a volunteer, she serves the Life Serve Blood Center of Iowa and is active in the docent program of the Des Moines Art Center.

Randall H. Hamilton, MD

Neurologist, Mercy Ruan Neurology Clinic and Research Center
1111 6th Avenue
East Tower, Suite A100
Des Moines, Iowa 50314
Second term expires 12/2015

A native of Newton, Iowa, Randall Hamilton is a neurologist at Mercy Clinics, Inc., Iowa, where he has practiced in the Greater Des Moines area since 1996. Following his studies in microbiology and medicine at the University of Iowa in Iowa City, he joined the Mercy family to focus his interest in Parkinson's disease and other movement disorders. Dr. Hamilton travels from Des Moines to Winterset, Iowa where he directs a general neurology outreach practice. In 2004, he took a leave of absence from medicine to pursue a lifelong interest in architecture, earning his Masters in Architecture at Iowa State University, Ames in 2007. He is active member of the Des Moines Art Center Print Club, as well as effective volunteer who has served the museum on several committees. Dr. Hamilton has been playing piano since age seven and is an avid supporter of the Des Moines Symphony Orchestra; he currently serves on its Board of Trustees.

The Honorable Christine L. Hensley

Des Moines City Council
400 Robert D. Ray Drive
Des Moines, Iowa 50309-1891
Appointed by Des Moines City Council, 2004

Council member Christine Hensley was elected to the Des Moines City Council in January 1994 and serves Ward III of Des Moines. She was reelected to a fifth four-year term in November 2009. She is committed to public service and community enrichment, and is a member of numerous boards, including Iowa Student Loan Liquidity Corporation, BRAVO, Metropolitan Planning Organization, Des Moines Area Regional Transit (DART), Rebuilding Together, Des Moines Art Center, Des Moines Arts Festival, Iowa Bankers Association Board, Des Moines Symphony, Polk County Housing Trust Fund, Metro Advisory Council, Neighborhood Finance Corporation and Pappajohn

BOARD OF DIRECTORS

Pamela Bass-Bookey

Owner, Temple for Performing Arts
1011 Locust Street, Suite 302
Des Moines, Iowa 50309
Third term expires 12/2013

A Chicago native, Pamela Bass-Bookey is interested in the arts and the impact they can have on society. Through her work as a philanthropist, former co-chair of the Des Moines Arts Festival, and countless other initiatives, she is a recognized leader in the broader Des Moines community. In 2001 she and her husband, Harry Bookey, purchased a 98 year-old Masonic Temple, restored the historic building, and turned it into the Temple for Performing Arts—a catalyst for widespread downtown revitalization and development. The Temple is now home to several local businesses, as well as a theater. She is involved with Des Moines' urban revitalization and development as well as the creation and design of four restaurants. As the founding President of the Greater Des Moines Public Art Foundation, she has led the charge in shaping the aesthetics of Des Moines residents' surroundings, bringing art by world renowned artists to the city.

Lois Fingerman | Art Collector

Independent Civic & Social Organization Professional
2909 Cayuga Point
Des Moines, Iowa 50321
Third term expires 12/2015

A Boston native who moved to Des Moines in 1967, Lois Fingerman worked for a number of years as Counseling Manager of Planned Parenthood of Greater Iowa,

Louise Bourgeois
[American, b. France, 1911-2000
Spider, 1997
Bronze
Des Moines Art Center Permanent Collections; Gift of John and Mary Pappajohn, 2013.1
Photo: Connie Wilson

Higher Education Foundation. In her professional career, Hensley was the Regional Community and Government Affairs Officer for Bank of the West, covering eight midwest states. Hensley was born and raised in Des Moines, Iowa and attended St. Joseph's Academy and Drake University.

G. David Hurd

Chairman Emeritus
Principal Financial Group and
Community Leader
300 Walnut Street, Box #183
Des Moines, Iowa 50309-2224
Third term expires 12/2014

A native of Chicago, David Hurd is Emeritus Chairman of the Principal Financial Group, the leading global financial provider and U.S. leader in 401(k) plans. He currently serves on the boards or volunteers for several nonprofit organizations, mostly in the Des Moines area. His distinguished career includes numerous awards: Honorary Doctor of Public Service—Drake University; Iowa Insurance Hall of Fame; Des Moines Register's Iowa Business Leader of the Year; Greater Des Moines Committee Iowa Business Hall of Fame; Community Commitment Award—Greater Des Moines Partnership, Outstanding Volunteer Fundraiser—National Society of Fundraising Executives; the Lilywhite Award—Employee Benefit Research Institute, to name only a few.

SECRETARY and TREASURER

Kristi Lund Lozier

Artist
3511 St. Johns Road
Des Moines, Iowa 50312
Third term expires 12/2013

Former media director and VP of marketing, Lozier is a community leader and artist. She studied at the University of Nevada where she earned a Bachelor of Arts degree in art and journalism. She has been a regular participant in Aspen Ideas Festival, Aspen Institute in Colorado, which brings together leaders from the U.S. and abroad. Lozier was co-founder and president of Greenwood Historic Neighborhood Association, a sponsor of the "Lost Boys from Sudan," and has been active in numerous organizations, including Ballet Iowa, Best Buddies, Central Presbyterian Church, Des Moines Metro Opera, Des Moines Public Schools, Des Moines Symphony Alliance, Orchard Place, and Junior League of Des Moines. She was appointed to the Greater Des Moines Public Art Commission in 2001, and has served on the Foundation Board since 2004.

PRESIDENT

Paul Mankins FAIA LEED® AP
Principal, Substance Architecture
1300 Walnut Street, Suite 201
Des Moines, Iowa 50309
Third term expires 12/2014

Paul Mankins began his career in the office of Charles Herbert & Associates—Iowa's most celebrated design practice. Following graduate studies at Yale University and professional stints with Smith Miller + Hawkinson in New York City and Kaplan McLaughlin Diaz in San Francisco, he returned to Iowa working with Herbert Lewis Kruse Blunck Architecture where he was named a Principal in 1999. In 2004, he and his partners formed substance—a nationally recognized collaborative design practice engaged in architecture, interior architecture, and design. Also in 2004, he was elected to the College of Fellows of the American Institute of Architects. Mankins has directed the design of projects recognized with over 35 Honor and Merit Awards for design from the Central States Region, Iowa, and San Francisco Chapters of the American Institute of Architects. Since 1998 he has served as an Adjunct Instructor teaching Architectural Design in the Department of Architecture at Iowa State University, Ames. His work has been published widely and he is a frequent speaker and design awards juror.

VICE-PRESIDENT

Katherine Murphy

Vice President/Community Support
Wells Fargo Bank
666 Walnut Street
Des Moines, Iowa 50309
Second term expires 12/2014

Kathy Murphy currently serves as Community Affairs Manager for Wells Fargo Bank in Des Moines. Her responsibilities include planning and coordinating community sponsorships, charitable giving, volunteerism, and the annual Community Support, United Way campaign. She studied at Connecticut College on the southern New England coast and earned her undergraduate degree in English at the University of Iowa. Before joining Wells Fargo in 1998, she managed Percival Galleries in Des Moines for two years, and was a senior manager for Younkers' chain of retail stores. Currently, she also serves as Vice President of The Hoyt Sherman Place Foundation in Des Moines and heads its development committee.

Cynthia A. O'Brien

Associate AIA, LEED® AP
Director of Design 515
3810 Brentwood Drive
Des Moines, Iowa 50312
Second term expires 12/2015

Cynthia O'Brien is an Associate with the American Institute of Architects and is a LEED Accredited Professional. Her focus is to raise the awareness of green building and sustainable design in the residential market. Ms. O'Brien holds a Master of Architecture degree from Iowa State University, and a B.F.A. from Drake University in Architectural Interior Design with a Business Marketing Minor and an emphasis in Art History. She is also active in the community serving on boards such as the Des Moines Public Library Foundation, The National Society of The Colonial Dames of America in the State of Iowa and The O'Brien Family Foundation.

Anastasia Polydorán

Art Collector
5110 Pleasant Street
Des Moines, Iowa 50312
Second term expires 12/2014

A native of Milwaukee, Wisconsin, Anastasia Polydorán, is a devoted art advocate and collector of contemporary art. She has been an active members of numerous nonprofit boards and committees throughout Greater Des Moines for many years. With her late husband, she established the Paul and Anastasia Polydorán Collection at the Des Moines Art Center, and regularly gifts contemporary works of art to the museum. She joined the Des Moines Art Center Board of Directors and has been a long standing member of the museum's Acquisition Committee. She is past president of the Des Moines Playhouse.

Pat Schneider

Community Leader Associate,
Ferguson Commercial Real Estate
1840 NW 118th Street, Suite 100
Clive, Iowa 50325
Second term expires 12/2014

Pat Schneider has been a Commercial Real Estate agent for more than 15 years. Previously, she was with West Real Estate focusing in the sales and marketing arena. It was during this time she became directly involved with a number of community organizations and developed a passion for volunteering. Schneider serves on the boards of the Des Moines Art Center, Des Moines Playhouse, Planned Parenthood Foundation, Eyerly Ball Mental Health Center, Drake University Bulldog Board,

Title Guaranty, and Blank Park Zoo Capital Campaign. She is a past president of the Junior League of Des Moines and Polk County Medical Auxiliary. In 2006, she was named a Woman of Influence by the Des Moines Business Record.

Ted M. Stuart

President
Architectural Arts, Inc.
2200 East Ovid Avenue
Des Moines, Iowa 50313-4747
First term expires 12/2015

Ted Stuart is the President of Architectural Arts, one of the Midwest's preeminent commercial millwork companies, that he helped found in 1998. The company does high-end architectural millwork for major construction projects across the country such as the Children's Hospital Colorado in Denver, Disney's Grand California Hotel in Anaheim, and Stanford Law School, Stanford University in Palo Alto. A native of Des Moines, Stuart is a graduate of the University of Iowa. He has worked for the 3M Company and The Des Moines Register, and was President of the Des Moines Heritage Cable Television system prior to its sale in 1990. He is a graduate of the Des Moines Leadership Institute and has been active on numerous civic organization boards, including The Des Moines Development Commission, the BBB, the Metro Opera, the Des Moines Community Playhouse, Orchard Place, and the Science Center of Iowa. He is also a very amateur artist.

EX-OFFICIO LEGAL ADVISOR

Carol J. Moser

Assistant City Attorney
City of Des Moines
400 Robert D. Ray Drive, 3rd Floor
Legal Department
Des Moines, Iowa 50309

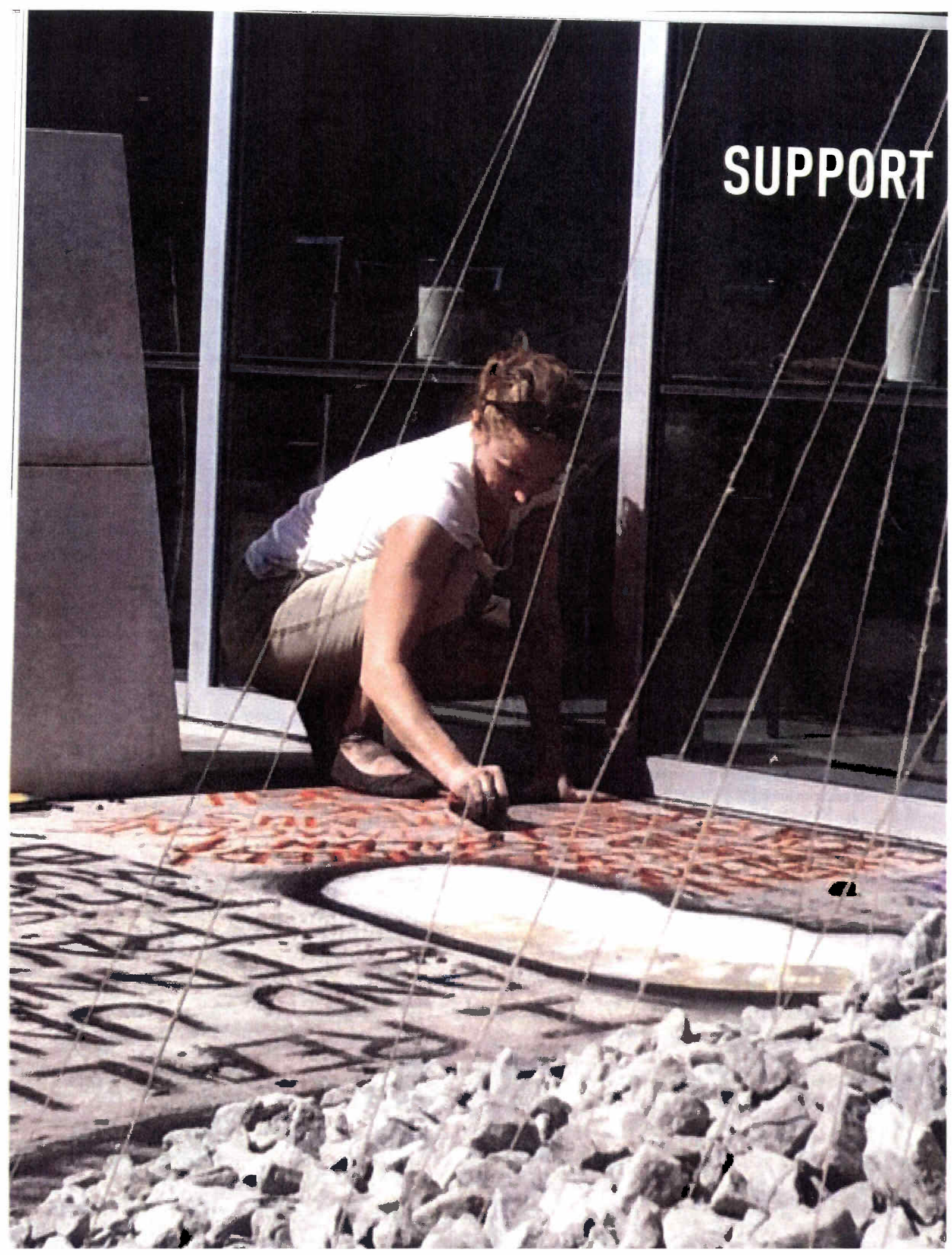


Public Art Foundation board members and director pose with the artist during the public dedication of Jun Kaneko's *Dangos* at the HubSpot along Principal Riverwalk, Des Moines, Iowa.

- 1 Paul Mankins, principal of Substance Architecture; president of GDMPAF Board
- 2 King Au, owner of King Au Studio; GDMPAF Board
- 3 M. Jessica Rowe, director of GDMPAF
- 4 Kristi Lund Lozier, artist; secretary and treasurer of GDMPAF Board
- 5 Anastasia Polydorou, art collector; GDMPAF Board
- 6 Katherine M. Murphy, vice president of Community Support, Wells Fargo Bank; vice president of GDMPAF Board
- 7 Pamela Bass-Bookey, owner of Temple for the Performing Arts; GDMPAF Board
- 8 Lois Fingerman, art collector; independent civic & social organization professional; GDMPAF Board
- 9 The Honorable Christine L. Hensley, member of Des Moines City Council; GDMPAF Board
- 10 Jun Kaneko, artist
- 11 Pat Schneider, community leader; associate of Ferguson Commercial Real Estate; GDMPAF Board
- 12 G. David Hurd, chairman emeritus of Principal Financial Group; GDMPAF Board
- 13 Mary A. O'Keefe, senior vice president and chief marketing officer of Principal Financial Group; former board member
- 14 Cynthia A. O'Brien, architect; director of Design 515; GDMPAF Board
- 15 Randall H. Hamilton, MD, neurologist at Mercy Ruan Neurology Clinic and Research Center; GDMPAF Board
- 16 Jeff Fleming, director of Des Moines Art Center; GDMPAF Board



SUPPORT



This page lists the many extraordinary donors who inspire excellence at the Greater Des Moines Public Art Foundation. The Public Art Foundation, a 501(c)3 organization, is dependent upon contributions from individuals, foundations, and corporations to make possible its public art program. We acknowledge this assistance with deep gratitude.

DONORS

\$300,000 – \$399,999

INBA Monument Fund

\$200,000 – \$299,999

James W. Hubbell, Jr., and Helen Hubbell Charitable Foundation

\$100,000 – \$199,999

City of Des Moines

\$50,000 – \$99,000

Michele and Barry Griswell
Trudy and G. David Hurd
Lynette and Kurt Rassmussen

\$10,000 – \$49,999

Anonymous Individual
BRAVO

\$3,000 – \$9,999

O'Brien Family Foundation

\$1,000 – \$2,999

Pamela Bass-Bookey
Kristi Lund Lozier
Randall H. Hamilton, MD,
and Bruce L. Hughes, MD
Lynn and Paul Mankins
Katherine Murphy
Dr. Paul and Anastasia
Polydorou Trust
Pat and Lou Schneider
Ted and Kathy Stuart

\$100 - \$999

Lois and Lou Fingerman
Jeff and Carrie Fleming
The Honorable Christine Hensley
Operation Downtown
Robert A. Mannheimer

GDMPAF wishes to acknowledge contributions which made up the INBA Monument Fund. This fund supported the public art project *A Monumental Journey* honoring the founders of the National Bar Association in Des Moines, Iowa. The following includes all gifts of \$100 or more.

\$100,000 +

Prairie Meadows

\$75,000 – \$99,999

William C. Knapp Charitable Foundation

\$25,000 – \$74,999

Community Foundation
Leadership Fund
Martha J. Gross
Fred and Charlotte Hubbell Foundation

\$10,000 – \$24,999

City of Des Moines
Townsend Vision, Inc
Wells Fargo Foundation

\$5,000 – \$9,999

Bank of the West
EMC Insurance Companies
G. David & Barbara Hurd Fund;
David Hurd Revocable Trust;
Mr. G. David Hurd
Iowa State Bar Foundation
Mr. and Mrs. William C. Knapp II
Odell G. McGhee II
National Bar Institute
Mary and John Pappajohn

\$1,000 - \$4,999

American Equity Investment
Life Insurance Company
Rep. Wayne W. Ford and
Ms. Romonda D. Belcher
Belin McCormick Attorneys
at Law
Brick, Gentry, Bowers, Swartz,
and Levis, P.C.
Linda Carter
Mr. and Mrs. J. Michael Earley
Faegre & Benson Foundation
Mr. and Mrs. Nolden Gentry
Hy-Vee Food Stores, Inc.
Lincoln Inne
Paul M. Lisnek & Associates
National Association of Bench
and Bar Spouses Foundation
Mr. and Mrs. Rolland
"Bud" W. Nelson
Law Office of Rogert P. Owens P.C.
Polk County Auditor
Watson Powell Fund
Mr. and Mrs. Robert G. Riley Jr.
Diann Wilder-Tomlinson

\$500 - \$999

Attorney Admission Fee Fund
Marion Beatty
Dory L. Briles
Marcella David
Federal Bar Association
Iowa Chapter
Fiedler & Timmer, P.L.L.C.
C. Edwin Moore Inn
National Black Prosecutors
Association
Nyemaster, Goode, Voights,
West, Hansell
Dr. and Mrs. Mike Richards

\$100 – \$499

Sally Pederson and
James A. Autry
Mr. and Mrs. Hal S. Chase
Mrs. and Mrs. David L. Claypool
Danos Family Fund
Mr. and Mrs. Dwight Dinkla
Marsha Ternus and
Denny Drake
Rich Eychaner
Farmers Mutual Hail
Insurance Company
Krista Ferguson
James M. Gardner
Jacquelyn Holmes Gibbs
and Craig Gibbs
Mark Godwin
Mr. and Mrs. Lawrence E. James
Mr. and Mrs. Norman E. Jenkins
Susan Judkins-Josten
and Robert Josten
Kevin M. Kirlin
Mr. and Mrs. Richard Kotz
Diane Kutzko
Mr. and Mrs. Mike LaMair
Vicky Long Hill, JD
Mrs. and Mrs. Russell Lovell II

IN-KIND GIFTS

King Au
Beeline & Blue
Larry Bradshaw
BNIN Architecture
Jonathan deLima
Lea Rosson DeLong, PhD
Sarah Ekstrand
Patrick Fleming
Lucca Restaurant
Essman and Associates
Mark Goodrich
Renee Shull Harmon
Robert Kalderberg
Mickey Koch
Molly Kotval
Operation Downtown
Stacy Nevinski
Kevin Schnell
David Schmitz
Substance, LLC
Christopher Tarbox
Susan Watts
Connie Wilson Design

PARTNERSHIPS

6th Avenue Corridor, Inc.
Artstop
Arthur J. Gallagher & Company
Capital Square
Children and Family Urban
Ministries
City of Des Moines
City Parks and Recreation
Department
City Engineer Department
City Manager Office
Community Foundation of
Greater Des Moines
Court Avenue Cultural District
Downtown Community Alliance,
affiliate of Greater Des Moines
Partnership
Des Moines Bicycle Collective
Des Moines Performing Arts
Des Moines Riverfront
Development Authority
Des Moines Social Club
Des Moines Water Works
Downtown Neighborhood
Association
Greater Des Moines Botanical
Garden
Historic East Village
Ingersoll Cultural District
Iowa Events Center
Iowa National Bar Association
Jun Kaneko Studio, Omaha, NE
Meredith Corporation
Polk County Board of Supervisors
Principal Riverwalk
River Bend and Cheatom Park
Neighborhoods
Roosevelt Cultural District
R & R Studios, Miami, FL
Science Center of Iowa
Temple for Performing Arts
University of Iowa's Division of
Continuing Education

STATEMENT OF FINANCIAL POSITION
AS OF JUNE 30, 2013

ASSETS

Money Market	\$1,124,784.90
Accounts Receivable	\$12,099.81
TOTAL ASSETS	\$1,136,884.71

LIABILITIES

Accounts Payable	\$25,413.86
TOTAL LIABILITIES	\$25,413.86

NET ASSETS

Unrestricted Net Assets	\$126,357.97
Board Restricted Net Assets	\$985,112.85
TOTAL NET ASSETS	\$1,111,470.85

TOTAL LIABILITIES AND NET ASSETS	\$1,136,884.71
---	-----------------------

FINANCIALS

BACKGROUND

David B. Dahlquist (American, born 1958)

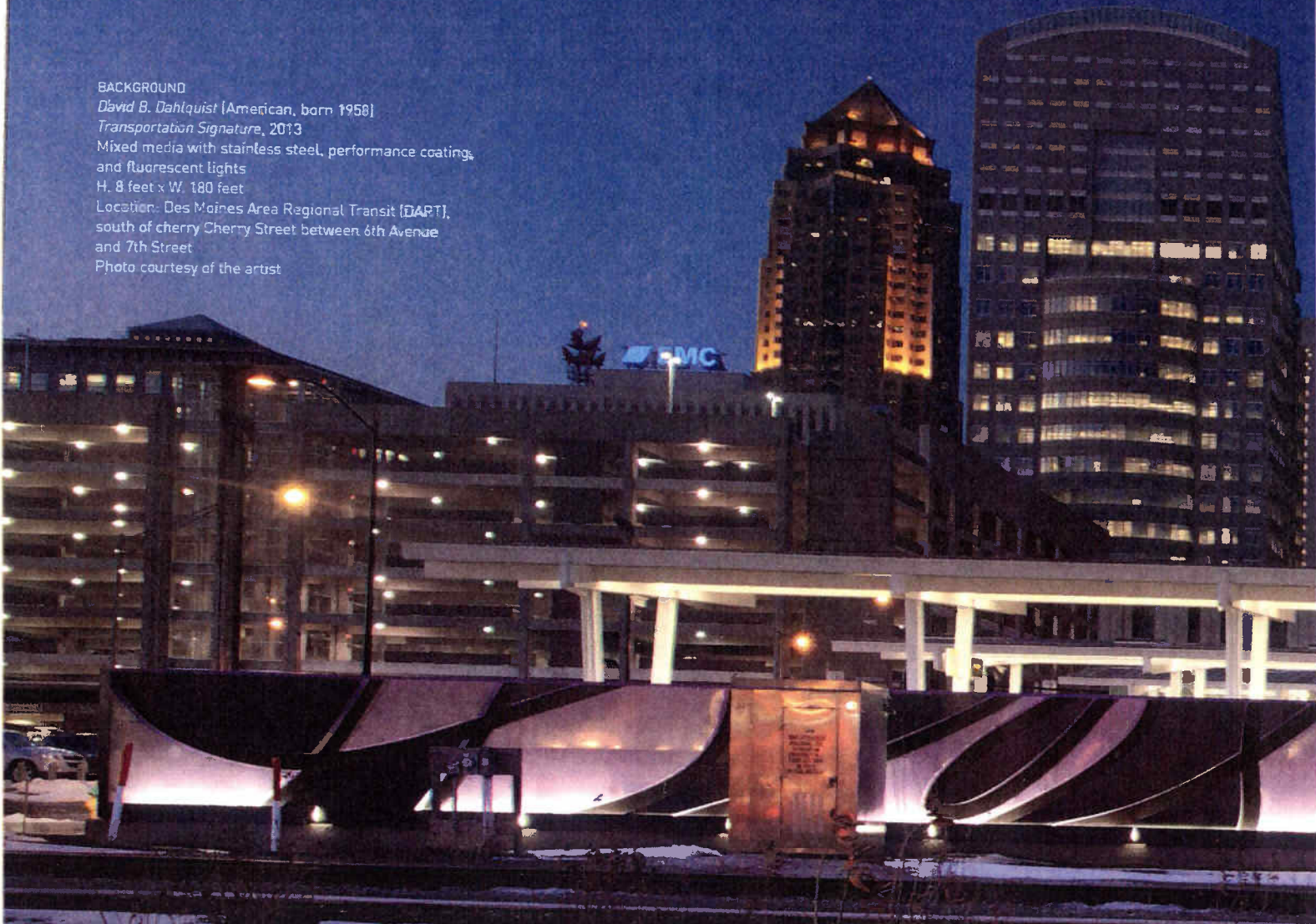
Transportation Signature, 2013

Mixed media with stainless steel, performance coatings,
and fluorescent lights

H. 8 feet x W. 180 feet

Location: Des Moines Area Regional Transit (DART),
south of cherry Cherry Street between 6th Avenue
and 7th Street

Photo courtesy of the artist



STATEMENT OF OPERATIONS FOR
JULY 1, 2012 THROUGH JUNE 30, 2013

SUPPORT AND REVENUE

GIFTS AND GRANTS

Individual	\$79,338.00
Foundation / Corporate	\$522,441.82
City of Des Moines	\$100,000

TOTAL SUPPORT AND REVENUE \$701,829.82

EXPENSES

ADMINISTRATIVE

Accounting	\$5,982.61
Insurance	\$679.77
Bank Services and Misc	\$856.31
Consulting Services	\$63,258.00
TOTAL ADMINISTRATIVE	\$70,776.69

PUBLIC ART PROGRAM

Projects	
6th Avenue Bridge	\$15,000.00
6th Avenue Mural Project	\$9,909.10
Project Spaces	\$18,000
Insurance	\$6,063.23
Kaneko Art Project	\$196,556.49
Water Works Park	\$10,000
Other	\$1,798.35
Total Projects	\$257,327.17

Development

Community Engagement	\$4,547.20
Marketing	\$4,691.77
Total Development	\$9,238.97

Education

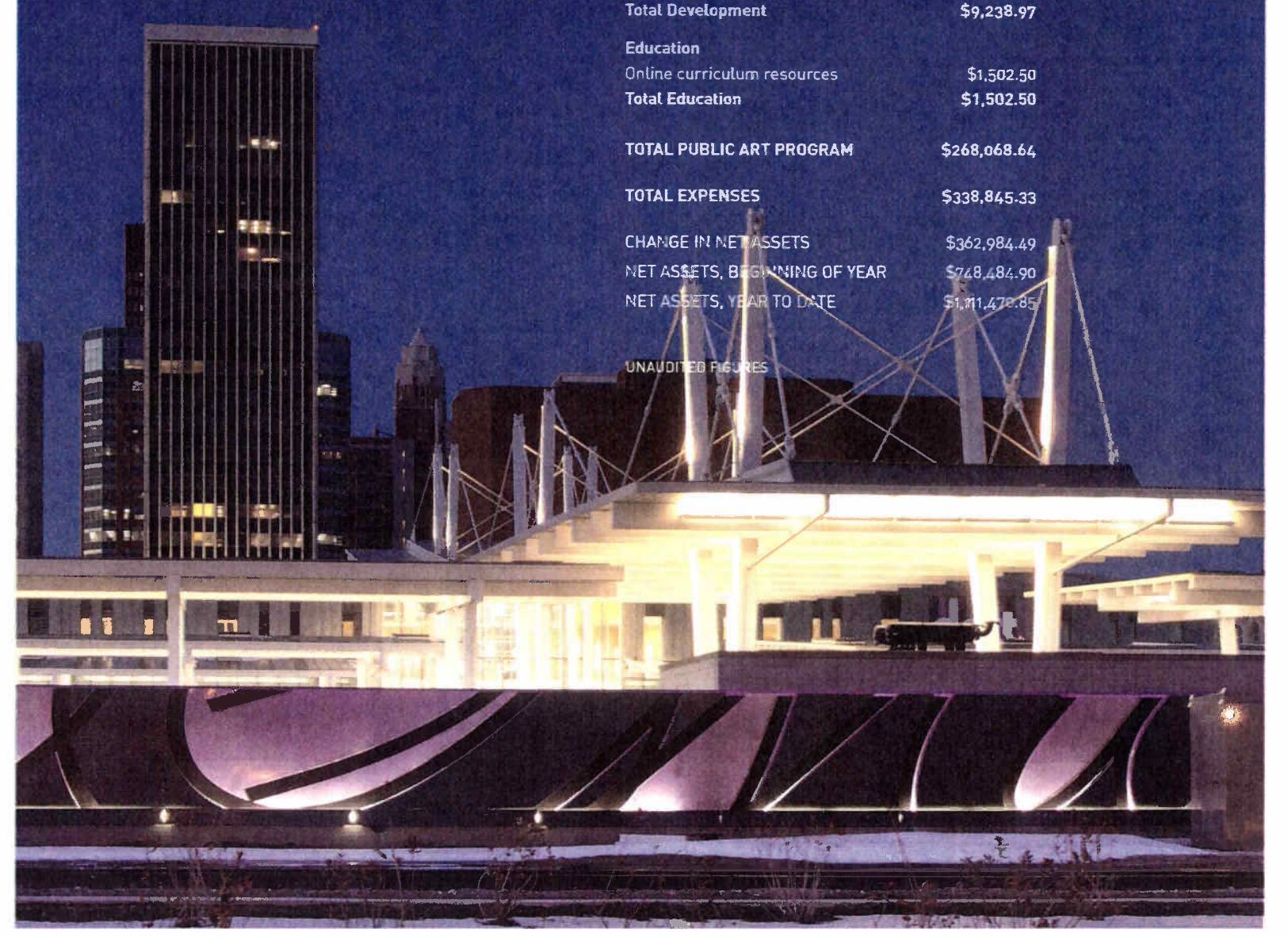
Online curriculum resources	\$1,502.50
Total Education	\$1,502.50

TOTAL PUBLIC ART PROGRAM \$268,068.64

TOTAL EXPENSES \$338,845.33

CHANGE IN NET ASSETS	\$362,984.49
NET ASSETS, BEGINNING OF YEAR	\$748,484.90
NET ASSETS, YEAR TO DATE	\$1,111,470.85

UNAUDITED FIGURES





PUBLIC FOUNDATION
GREATER **ART**
DES MOINES

dsmpublicartfoundation.org
[facebook.com/dsmpublicartfoundation](https://www.facebook.com/dsmpublicartfoundation)
twitter.com/dsmpublicart

Organized by M. Jessica Rowe
Design by Connie Wilson
Greater Des Moines Public Art Foundation
1915 Grand Avenue
Des Moines, Iowa 50309-3311
www.dsmpublicartfoundation.org
© Greater Des Moines Public Art Foundation 2013
All rights reserved

Jun Kaneko (American, born Japan, 1942)
Untitled, Dangos (2004) (cover detail)
Untitled, Dangos (2008) (back detail)
Hand built glazed ceramic
Collection of Greater Des Moines
Public Art Foundation, 2010.1-5
Photos M.J. Rowe