

★ **Roll Call Number**

Agenda Item Number

21

Date December 8, 2008

Receipt of the Roosevelt Cultural District Vision Committee Report & Recommendations as presented to the Roosevelt Cultural District Board

Moved by _____ to receive and file the attached report

COUNCIL ACTION	YEAS	NAYS	PASS	ABSENT
COWNIE				
COLEMAN				
HENSLEY				
KIERNAN				
MAHAFFEY				
MEYER				
VLASSIS				
TOTAL				

CERTIFICATE

I, DIANE RAUH, City Clerk of said City hereby certify that at a meeting of the City Council of said City of Des Moines, held on the above date, among other proceedings the above was adopted.

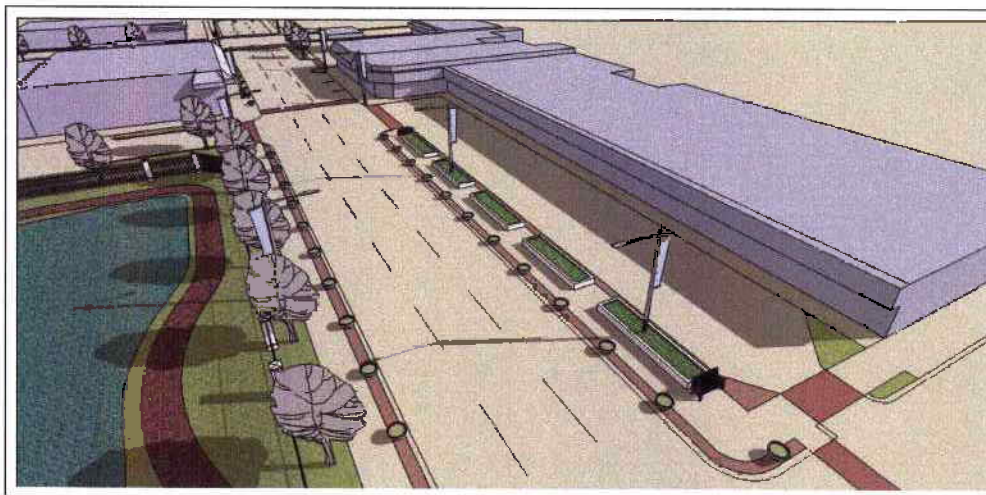
IN WITNESS WHEREOF, I have hereunto set my hand and affixed my seal the day and year first above written.

MOTION CARRIED

APPROVED

Mayor

City Clerk



**Roosevelt Cultural District
Vision Committee**

Report & Recommendations

Presented to

Roosevelt Cultural District Board

September 23, 2008

Roosevelt Cultural District Vision Committee Members

- Brian Browning, Community Representative
- Mary Brubaker, Ingersoll Park Neighborhood Association
- Kathie Danielson, Roosevelt High School Principal
- Robert Gernes, Waveland Park Neighborhood Association
- Kimberly Hansen, North of Grand Neighbors
- Rod McCullough, Des Moines Playhouse
- Anita Micich, Roosevelt High School Principal
- Susan Noland, Susan Noland Designs in Gold
- Diane Proctor, Community Representative
- Mary Reid, North of Grand Neighbors
- Tim Schott, Hubbell Elementary School Principal
- Mike Simonson, The Shops at Roosevelt
- Sheena Thomas, Elements, Ltd.

Purpose of Vision Committee

The Roosevelt Cultural District Vision Committee was created by the RCD Board and first convened in September 2006. Its purpose as defined by the Board is to

Develop an overall plan or sense of complete design for the Roosevelt Cultural District.

Focus of Vision Committee

The Vision Committee determined that its goal was to

Enhance the RCD for district properties and adjoining neighborhoods.

To accomplish that goal, the committee adopted three objectives, all of equal importance:

Objective 1: Improve the appearance and perception of the RCD

Objective 2: Accommodate existing levels of vehicular traffic

Objective 3: Increase safety for pedestrians

The Vision Committee decided that to enhance public perception and awareness of the Roosevelt Cultural District, it would be essential to improve the appearance of the District's primary street, 42nd Street. The committee agreed to concentrate on 42nd Street initially and look at the remainder of the District in subsequent phases. The committee thus focused on improvements along 42nd Street and three adjoining side streets: Rollins Avenue, Chamberlain Avenue, and Crocker Street.

Existing Conditions

42nd Street Appearance. In its current state the 42nd Street right-of-way between the freeway and Chamberlain Avenue is a rather desolate four-lane concrete strip. Even as it narrows to three lanes north of Chamberlain Avenue, and then narrows again to two lanes north of Crocker Street, its main function is obviously to move vehicular traffic quickly through the area, without regard for aesthetics. The west side of 42nd Street is lined with utility poles carrying overhead electrical transmission lines and cable television distribution lines. No street trees are planted along either side of 42nd Street between the freeway and Crocker Street.

42nd Street Heavy Vehicular Traffic. In addition to being the District's primary street, 42nd Street is one of the city's major thoroughfares. It is very heavily traveled between the freeway and University Avenue, carrying over 16,000 vehicles per day*.

* City of Des Moines, 42nd Street/Kingman Boulevard Streetlight Study, October 2005. 42nd St. average 24 hour weekday count immediately south of Kingman Boulevard: southbound 8,418, northbound 7,941.

42nd Street Pedestrian Safety and Convenience. Pedestrian travel is promoted in the neighborhood. Hubbell Elementary School encourages its students to walk to and from school. Quite a few Roosevelt students also walk to and from school. And the Waveland Park Neighborhood Association's Action Plan designates the entire neighborhood as a pedestrian-friendly area. But pedestrian safety and convenience along 42nd between the freeway and Crocker Street is inconsistent. Pedestrian signals are installed at Center Street and Chamberlain Avenue. But neither signals nor crosswalks are in place at Crocker Street, where during their lunch break and after school significant numbers of Roosevelt students dodge traffic daily to reach the convenience and pizza stores on the east side of the street. Nor is there a crosswalk at 43rd and Chamberlain, which is along the designated safe route for Hubbell School children walking to and from school. Continuous sidewalk is in place along the west side of 42nd Street. But none exists on the east side of the street south of Chamberlain Avenue, where the apparent pedestrian route is the walkways immediately in front of the shops and the Playhouse. No signage or painted markings are in place there to guide pedestrians along that route. Therefore, pedestrians frequently walk along the narrow traffic island that separates the Shops at Roosevelt parking lot from 42nd Street.

Plan Elements

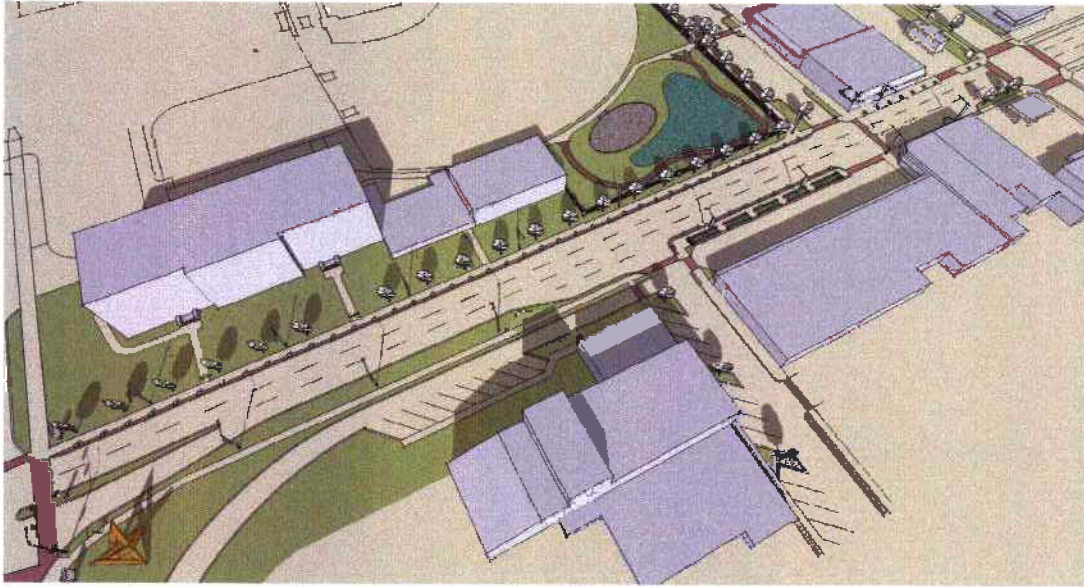
The Vision Committee proposes several **Plan Elements** to improve the appearance of 42nd Street, to enable it to continue to accommodate heavy vehicular traffic. These Plan Elements are described and illustrated on pages 4 through 6 of this report.

The Plan Elements are described area by area as follows:

- 42nd Street between the freeway and Crocker Streets
- Chamberlain Avenue / Crocker Street route
- Chamberlain Avenue east of 43rd Street
- Rollins Avenue
- Hubbell School Property

Vision Committee Recommendation

The Vision Committee further proposes that the RCD Board adopt these recommended Plan Elements and work with the City of Des Moines to begin implementation.



42nd Street: Center Street at far left, Crocker Street at far right

42nd Street

- Locate a major focal point at the northeast corner of 42nd and the freeway for an RCD welcome and ID signage, and as a potential site for outdoor art.
- Locate an RCD welcome and ID signage at the southwest corner of 42nd and Crocker.
- Examine the potential for outdoor art location west of the fire station in the traffic island between freeway on- and off-ramps (not shown).
- Reconfigure 42nd Street between Crocker and Center as a three-lane street with one lane northbound, one lane southbound, and a center turn lane.
- Retain the fourth lane in front of Hillyer's Cleaners as parallel parking space.
- Include a short fourth lane in front of the Playhouse to accommodate right-hand turns onto Rollins and into the Shops at Roosevelt front parking lot.
- Convert the easternmost lane of 42nd between Chamberlain and Center into a wide sidewalk and planting spaces for trees, grass, and flowerbeds.
- Add a wide sidewalk to the east side of the street between Rollins and the freeway off-ramp.
- Widen the sidewalk on the west side of the street in front of Hubbell Elementary School.
- Retain the pedestrian crossing signal at 42nd and Chamberlain.
- Plant street trees along both sides of the street, but delay planting along the Playhouse frontage until it is determined whether potential renovation to that facility will take place.
- Set freestanding planters on both sides of the street between the curb and sidewalk to separate pedestrians from vehicular traffic.
- Replace the narrow strip of turf along the west side of the street between the curb and sidewalk with textured paving.
- Bury the overhead electrical and cable TV lines between the freeway and Crocker.



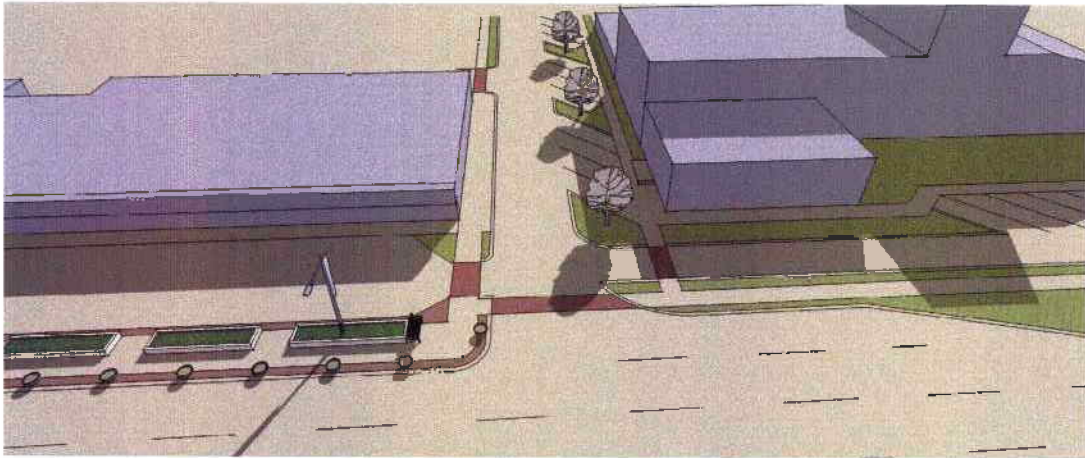
Chamberlain and Crocker Looking West: Chamberlain at left; Crocker at right

Chamberlain Avenue / Crocker Street Route

- Re-establish the historic Chamberlain-Crocker alignment as a two-way street to provide a continuous route connecting neighborhoods east and west of 42nd Street.
- Add a pedestrian crosswalk table across Crocker Street in front of the Roosevelt Manor apartments.
- Reconfigure the Chamberlain-Crocker intersection in front of Roosevelt Manor apartments, bumping out the curb on the south side of the street to narrow the intersection and add green space.
- Add street trees along Crocker Street west of 42nd Street.
- Study the necessity/desirability for a signalized intersection at 42nd and Crocker, after it is determined how the new traffic signals at 42nd and Kingman Blvd. modify southbound 42nd Street traffic flow.

Chamberlain Avenue east of 43rd Street

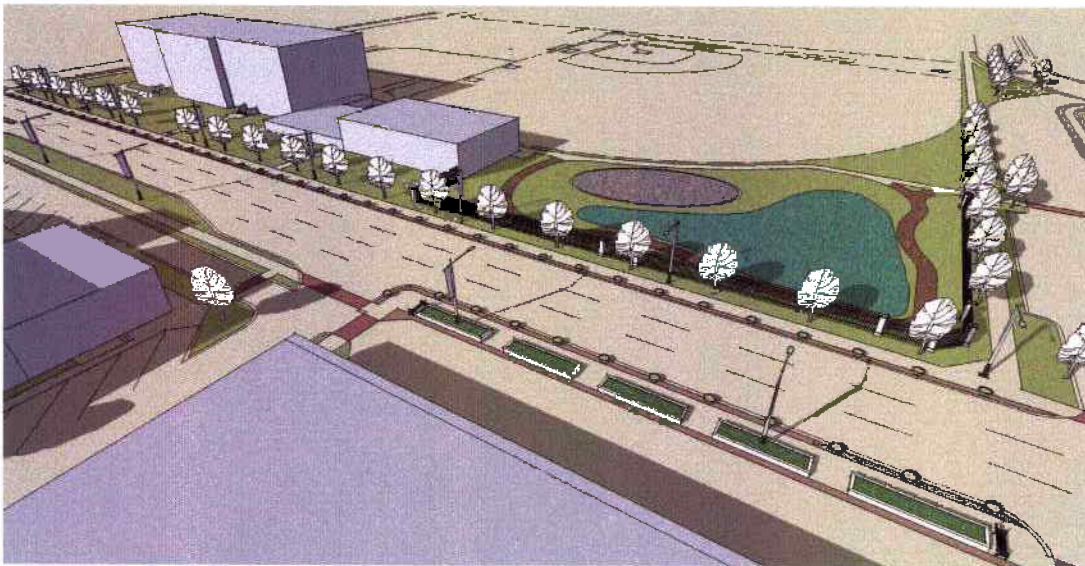
- Relocate the mid-block pedestrian crosswalk slightly east to align with walk leading into Hubbell School property and add curb bump-outs for pedestrian safety.
- Reconfigure the parking lot entry drives west of Boulevard Sports to put them at a safe distance from the relocated crosswalk.
- Keep the current configuration of Chamberlain Avenue between 42nd and 43rd as a two-way street with parallel parking along both sides.
- Reconfigure the Chamberlain-Crocker intersection so that Chamberlain east of 43rd Street forms a right-angled tee with the Chamberlain-Crocker realignment.
- Narrow Chamberlain at the east end to define parallel parking areas near 42nd Street and add green space.
- Add street trees along the south side of Chamberlain west of 42nd Street.



Rollins Avenue Looking East: Shops at Roosevelt at left; Playhouse at right

Rollins Avenue

- Retain the current one-way eastbound configuration.
- Add back-in diagonal parking stalls to the south side of the street.



Hubbell School: 42nd Street and Chamberlain Avenue frontages

Hubbell School Property

- Support school site committee efforts to improve playground north of new gym addition.
- Support school site committee efforts to convert the storm water detention basin near 42nd and Chamberlain to a rain garden.
- Support school site committee efforts to replace the chain link fence along 42nd and Chamberlain with a brick pier and wrought iron fence.
- Support school site committee efforts to add tree and shrub plantings to school grounds along 42nd Street.

City and Community Involvement

Vision Committee representatives presented its initial Plan Elements to various City of Des Moines officials, the general public, and several west side neighborhood associations. Committee members also discussed the Plan Elements with RCD merchants. Comments and concerns raised at these presentations resulted in modification of some initial Plan Elements to what is proposed in this report. Transcripts of the comments and concerns, letters of endorsement from neighborhood associations, and a petition signed by several neighborhood merchants are presented at the end of this report.

Meetings with City Officials

- Mayor Frank Cownie discussed the Plan Elements with the RCD Vision Committee at a meeting he attended on August 28, 2007.
- Councilwoman Christine Hensley discussed the Plan Elements with the RCD Vision Committee at meetings she attended on October 17, 2006 and May 29, 2007.
- City Traffic and Transportation Department head Gary Fox discussed the Plan elements on two occasions. He met with two members of the RCD Vision Committee on March 5, 2007; he also attended a Vision Committee meeting on May 29, 2007.
- One member of the RCD Vision Committee met with City Forester L G (Skip) Moore on August 29, 2007 to look over the area and discuss possibilities for street trees.

General Public Presentations of the Plan Elements

Comments received from people viewing a display of the Plan Elements are shown on the following pages.

- RCD Festival Week and Jazz in July performance, July 10, 2007
- RCD Festival Week, July 12, 2007

Neighborhood Association Presentations of the Plan Elements

Comments about the Plan Elements received from people attending various neighborhood associations are shown on the following pages.

- Drake Neighborhood Association board meeting, August 8, 2007
- Ingersoll Park Neighborhood general meeting, September 13, 2007
- Merle Hay Neighborhood Association board meeting, September 17, 2007
- North of Grand Neighbors board meeting, July 25, 2007
- North of Grand Neighbors general meeting, August 13, 2007
- Salisbury Oaks Neighborhood Association general meeting, August 22, 2007
- Waterbury Neighborhood Association board meeting, August 19, 2007
- Waveland Park Neighborhood Association board meeting, August 14, 2007
- Waveland Park Neighborhood Association general meeting, October 2, 2007

Neighborhood Association Endorsements

The RCD Vision Committee received endorsements from three neighborhood associations. Copies of the endorsement letters are presented on the following pages.

- Drake Neighborhood Association endorsement, dated August 13, 2007
- Ingersoll Park Neighborhood endorsement, (undated) received in September 2007
- North of Grand Neighbors endorsement, voice vote at July 25 meeting, no letter received

Local Merchants' Concerns

The RCD Vision Committee received a petition In September 2007 signed by several local merchants stating their concerns about some of the Plan Elements. A copy of the undated petition and signature sheet are presented on the following pages.

Comments from July 10 & 12 Open House During Festival Week			
Nice!			
Looks Good			
Trees are needed on the east side of 42nd street.			
Let's continue to move forward!			
A great improvement!			
Fantastic.			
I can see some definite benefit for the community.			
OK. Looks Good.			
Keep going-Good beginning			
Add pedestrian-carried red flags in cylindrical tubes to E & W sides of 42nd at pedestrian crosswalk	Feel Roosevelt Shops are in danger of extinction, recommend improvements on 42nd St. first and ASAP.	Would like 'Shops' signs at entrance to street.	Would insist on green space on 42nd by Shops. If it means giving up center median space by shops, would do it.
Slow the traffic down - Pronto!			
Trees are great.			
Support all except the one-way on Chamberlain			
Would oppose one-way Chamberlain & re-direct of traffic to Crocker unless all businesses agreed on Huge signage to make Bike World and Tailor visible - note that addition of trees along Hubbell yard would	Also need BIG WIDE PEDESTRIAN CROSSING W/FLASHING YELLOW LIGHT TO CROSS Crocker & Chamberlain.	Want Roosevelt H S. to have community event signage so we can see plays, games, etc.	
Concern about increased fights, more Crocker traffic and student garbage disposal.			
Great ideas-will love to see it finished.	Need a fountain & pond @ 42nd & Interstate ramp.		
We need contributors.			
Good ideas. What about bicycle			
Very interesting plan.			
Comments from July 25 North of Grand Neighborhood Board of Directors			
Endorsed the plan.	Suggested contact with schools about bus accessibility.	Also, it was noted that combination light pole/planters (as opposed to two separate poles) on the east side of 42 nd could preclude the addition of trees at some point.	Hopeful that the bike/hike path would soon be installed on the north side of the 1235 sound wall from 42 nd to the pedestrian bridge.

