



Roll Call Number

Agenda Item Number

45

Date June 22, 2009

An Ordinance entitled, "AN ORDINANCE to amend the Municipal Code of the City of Des Moines, Iowa, 2000, adopted by Ordinance No. 13,827, passed June 5, 2000, and amended by Ordinance No. 14,015 passed November 5, 2001, and Ordinance No. 14,437 passed April 25, 2005 by amending Sections 114-3461 and 114-3597 and adding and enacting new Sections 114-2152.5, 114-2940.5, 114-3331.5, 114-3544.5 and 114-3559.5 thereof, relating to traffic and vehicle regulations",

presented.

Moved by _____ that this ordinance be considered and given first vote for passage.

FORM APPROVED:

(First of three required readings)

K. Massier

Katharine Massier
Assistant City Attorney

COUNCIL ACTION	YEAS	NAYS	PASS	ABSENT
COWNIE				
COLEMAN				
HENSLEY				
KIERNAN				
MAHAFFEY				
MEYER				
VLISSIS				
TOTAL				

MOTION CARRIED

APPROVED

Mayor

CERTIFICATE

I, DIANE RAUH, City Clerk of said City hereby certify that at a meeting of the City Council of said City of Des Moines, held on the above date, among other proceedings the above was adopted.

IN WITNESS WHEREOF, I have hereunto set my hand and affixed my seal the day and year first above written.

City Clerk

SUMMARY OF ORDINANCE NO. _____


AN ORDINANCE to amend the Municipal Code of the City of Des Moines, Iowa, 2000, adopted by Ordinance No. 13,827, passed June 5, 2000, as heretofore amended, by amending Chapter 114 Traffic & Vehicle Regulations as summarized below. The complete text of the ordinance is available in the City of Des Moines City Clerk's Office, 400 Robert D. Ray Drive, Des Moines, Iowa, or on the City of Des Moines' website at www.dmgov.org.

DES MOINES TRAFFIC REGULATION CHANGES

Amending Chapter 114 of the Municipal Code regarding traffic regulation changes as follows:

- A. Designation of One-Side Parking Restrictions and Stop Control—Brook Run Village Plats 13, 14 and 15
- B. Parking Restriction to facilitate Solid Waste collection—north side of Maple Street from E. 36th Court to the dead end east.

FORM APPROVED:



Katharine Massier, Assistant City Attorney

T.M. Franklin Cownie, Mayor

Attest:

I, Diane Rauh, City Clerk of the City of Des Moines, Iowa, hereby certify that the above and foregoing is a summary of Ordinance No. _____, passed by the City Council of said City on _____, signed by the Mayor on _____, and published as provided by law in the Business Record on _____. Authorized by Publication Order No. _____.

Diane Rauh, City Clerk

ORDINANCE NO. _____

AN ORDINANCE to amend the Municipal Code of the City of Des Moines, Iowa, 2000, adopted by Ordinance No. 13,827, passed June 5, 2000, and amended by Ordinance No. 14,015 passed November 5, 2001, and Ordinance No. 14,437 passed April 25, 2005 by amending Sections 114-3461 and 114-3597 and adding and enacting new Sections 114-2152.5, 114-2940.5, 114-3331.5, 114-3544.5 and 114-3559.5 thereof, relating to traffic and vehicle regulations.

Be It Ordained by the City Council of the City of Des Moines, Iowa:

Section 1. That the Municipal Code of the City of Des Moines, Iowa, 2000, adopted by Ordinance No. 13,827, passed June 5, 2000, and amended by Ordinance No. 14,015 passed November 5, 2001 and Ordinance No. 14,437 passed April 25, 2005 is hereby amended by amending Sections 114-3461 and 114-3597 and adding and enacting new Sections 114-2152.5, 114-2940.5, 114-3331.5, 114-3544.5 and 114-3559.5 thereof, relating to traffic and vehicle regulations, as follows:

Sec. 114-2152.5. Brook Run Drive.

Brook Run Drive, at Park Side Drive, stop.

Sec. 114-2940.5. East Forty-ninth Street-Richmond Avenue to Park Side Drive.

East Forty-ninth Street, north and west sides, from Richmond Avenue to Park Side Drive, no parking any time.

Sec. 114-3331.5. East Hull Avenue-East Forty-eighth Street to east city limits.

East Hull Avenue, on the north and west sides, from East Forty-eighth Street to the east city limits, no parking any time.

Sec. 114-3461. Maple Street--East Second Street to Knob Hill Drive.

Maple Street, on the south side, from East Second Street to East Fourth Street, no parking any time.

Maple Street, on the north side, from a point 166 feet west of East Fourth Street to a point 35 feet west thereof, commercial loading zone.

Maple Street, on the north side, from East Ninth Street to East Twelfth Street, no parking any time.

Maple Street, on the south side, from East Twelfth Street to East Thirteenth Street, no parking any time.

Maple Street, on both sides, from East Fourteenth Street to a point 210 feet east of East Fifteenth Street, no parking any time.

Maple Street, on the south side, from a point 210 feet east of East Fifteenth Street to East Seventeenth Street, no parking any time.

Maple Street, on the north side, from East Seventeenth Street to a point 140 feet east of East Eighteenth Street, no parking any time.

Maple Street, on the south side, from East Eighteenth Street to East Nineteenth Street, no parking any time.

Maple Street, on the south side, from a point 50 feet west of East Twenty-first Street to a point 50 feet east of East Twenty-first Street, no parking any time.

Maple Street, on the north side, from East Twentieth Street to East Twenty-ninth Street, no parking any time.

Maple Street, on the south side, from a point 50 feet east of East Twenty-fifth Street to a point 50 feet west of East Twenty-fifth Street, no parking any time.

Maple Street, on the south side, from a point 50 feet east of East Twenty-seventh Street to a point 50 feet west of East Twenty-seventh Street, no parking any time.

Maple Street, on the south side, from a point 70 feet east of East Twenty-eighth Street to a point 60 feet west of East Twenty-eighth Street, no parking any time.

Maple Street, on the south side, from East Twenty-ninth Street to East Thirtieth Street, no parking any time.

Maple Street, on the north side, from East Thirtieth Street to a point 75 feet west thereof, no parking any time.

Maple Street, on the north side, from Williams Street to Knob Hill Drive, no parking any time.

Maple Street, on the north side, from East Thirty-sixth Court to a point 50 feet east thereof, no parking any time.

Maple Street, on the north side, from a point 180 feet east of East Thirty-sixth Court to the dead end east thereof, no parking Wednesday 7:00 a.m. to 4:00 p.m.

Maple Street, on the south side, from East Thirty-sixth Court to a point 250 feet east thereof, no parking any time.

Maple Street, on the north side, from East Fortieth Street to East Forty-first Street, no parking any time.

Sec. 114-3544.5. East Ovid Avenue—East Forty-second Street to east city limits.

East Ovid Avenue, on the north side, from East Forty-eighth Street to Park Side Drive, no parking any time.

Sec. 114-3559.5. Park Side Drive—Brook Run Drive to dead end north of East Ovid Avenue.

Park Side Drive, on the west side, from Brook Run Drive to the dead end north of East Ovid Avenue, no parking any time.

Sec. 114-3597. Richmond Avenue--York Street to ~~East Fortieth Court~~east city limits.

Richmond Avenue, on the south side, from York Street to Villa Vista Drive, no parking any time.

Richmond Avenue, on the north side, from East Fourteenth Street to a point 50 feet west thereof, no parking any time.

Richmond Avenue, on the north side, from East Fourteenth Street to a point 90 feet east thereof, no parking any time.

Richmond Avenue, on the south side, from East Twenty-fourth Street to East Twenty-fifth Street, no parking any time.

Richmond Avenue, on the north side, from East Twenty-sixth Street to East Twenty-ninth Street, no parking any time.

Richmond Avenue, on the south side, from East Thirty-eighth Street to a point 50 feet east thereof, no parking any time.

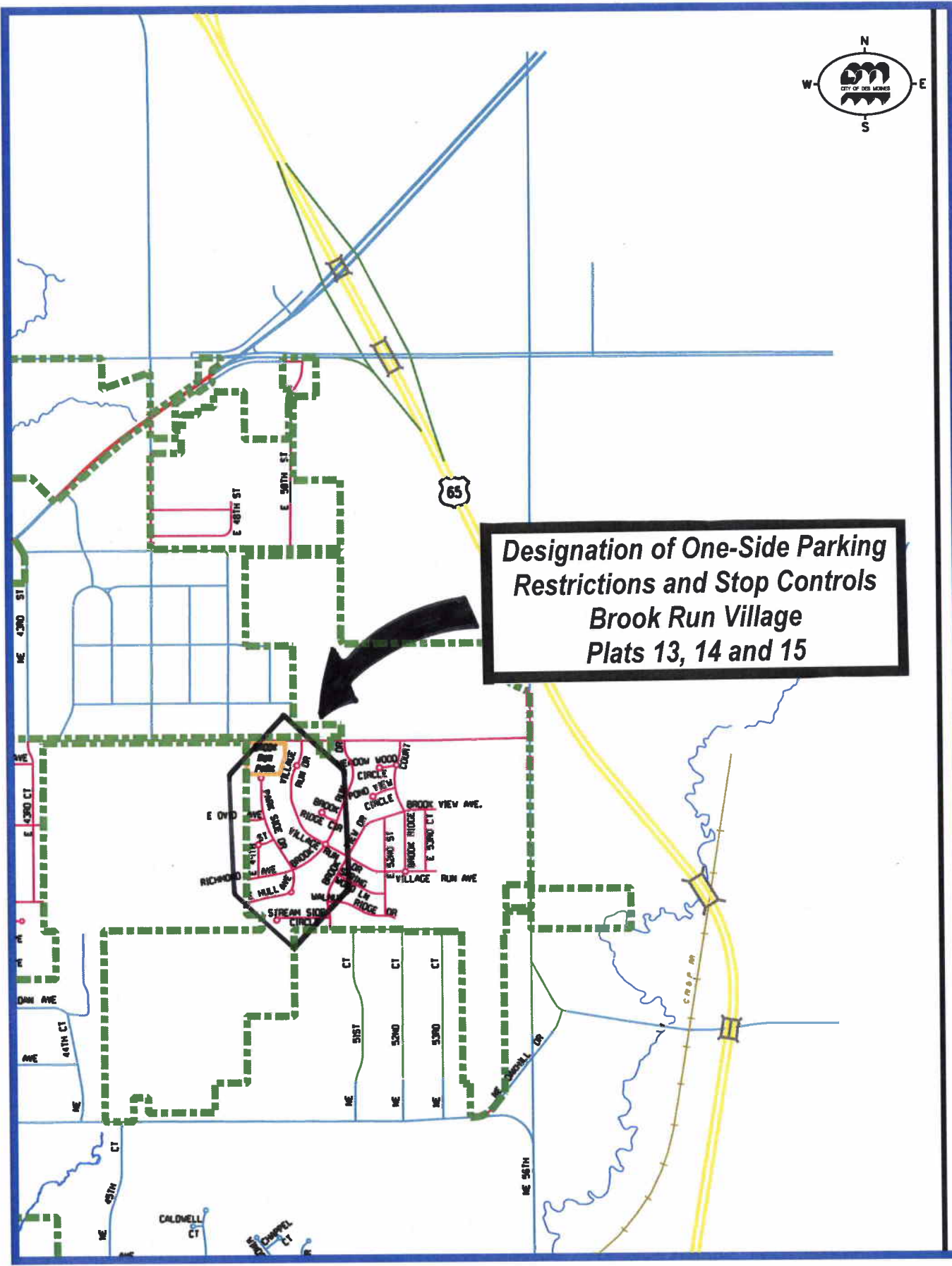
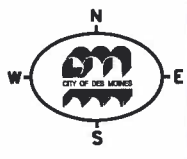
Richmond Avenue, on the north side, from East Thirty-eighth Street to East Fortieth Court, no parking any time.

Richmond Avenue, on the south side, from East Forty-eighth Street to the east city limits, no parking any time.

Sec. 2. This ordinance shall be in full force and effect from and after its passage and publication as provided by law.

FORM APPROVED:

K. Massier
Katharine Massier
Assistant City Attorney



**Designation of One-Side Parking Restrictions and Stop Controls
Brook Run Village
Plats 13, 14 and 15**



**Parking Restriction to Facilitate
Solid Waste Collection
North Side of Maple Street from
E 36th Court to the Dead End East**

